



CHARLOTTESVILLE OPEN

by Roger Mahach

Can a tournament be had without an announcement in *Chess Life*? Sure it can — just ask Mark Johnson. The sitting VCF President prepared for this year's Charlottesville Open by *not* advertising in the USCF magazine, a response to the federation's controversial increase in TLA fees from \$20 to around \$120. Has anyone noticed how sparse *Chess Life*'s "Tournament Life" section has become recently? So Johnson leveraged the Internet, *Virginia Chess*, word of mouth, and flyers distributed by Mike Atkins at the World Open to get the news out. The result: 65 players from six states showed up to do battle.



This year also marked a new format that seemed to please most of the players. The first two rounds were played at a rate of game/60, with round 1 starting at 2:30pm. This gave folks time to take care of things at home before setting out on a beautiful Saturday to meet old friends across the board. And of course players coming from West Virginia, Maryland & North Carolina surely appreciated the extra time!

Perhaps because the event fell right after the World Open, no masters entered the field this year. Several experts and many strong A players manned the top boards. Roger Mahach had lady luck on his side and took clear first

Continued next page



GEORGE WASHINGTON OPEN

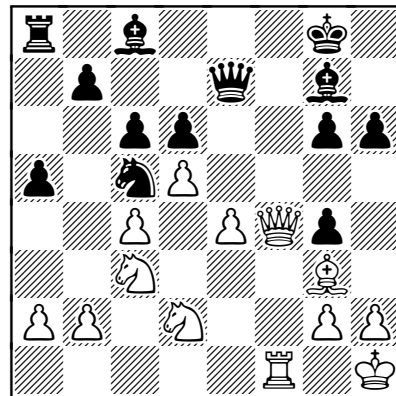
by Mike Atkins

The Best Western-Mt Vernon George Washington Open was played in Alexandria, June 16-17. Arlington's John Meyer emerged atop the field, taking clear first with 5^o points. For Meyer, who was ranked 4th on the wallchart, it was a nice return to top flight form. He began 4-0 and then faced Ilye Figler, of New York, on board one. Winner of this year's Virginia Open, owner of at least one IM norm, and a rare possessor of a FIDE rating 100 points higher than his USCF of 2294, Figler is always tough and usually underrated if under 2300.

ILYE FIGLER - JOHN MEYER

KING'S INDIAN

1 c4 g6 2 Nc3 Bg7 3 d4 Nf6 4 e4 d6 5 Be2 O-O
6 Bg5 Nc6 7 d5 Ne5 8 f4 Ned7 9 Nf3 Nc5 10
Nd2 a5 11 O-O c6 12 Kh1 Qe8 13 Qe1 h6 14
Bh4 Ng4 15 Qg3 f5 16 Rae1 Rf7 17 Bxg4 fxe4
18 Qe3 e5 19 fxe5 Rxf1+ 20 Rxf1 Qxe5 21 Bg3
Qe7 22 Qf4



22...Nd3 23 Qxd6 Qxd6 24 Bxd6 Bd7 25 e5
Nxe5 26 Nce4 Bf5 27 Nc5 cxd5 28 cxd5 Rd8 29
Nxb7 Rd7 30 Bxe5 Bxe5 31 Nc4 Rxb7 32 Nxe5
Rxb2 33 Rd1 Be4 34 d6 Rxd6 0-1

Meyer rounded off his victory by a last round draw with IM Oladapo Adu. Figler rebounded to win his last game and so reach a tie for

Continued on page 4





Charlottesville Open

continued

with 4° out of 5 It was a closely contested affair and the outcome wasn't at all clear until late into the final round. Other prizewinners included a large pack at 4-1 who shared the 2nd/3rd/expert/A monies: Harry S Cohen, Neil Markovitz, Chris Bush, William Van Lear, Mike Atkins, Patrick McCartney & Jon W Morris. Bill Carroll w a s top B. Brian Dickerson & Steve Graziano shared top C. Ryan Fitzgerald and James Johnson won the D and E prizes, respectively.

ROGER MAHACH - GEORGE HARRIS

CATALAN

Notes by Roger Mahach

1 Nf3 d5 2 g3 Nf6 3 Bg2 Nc6 4 d4 (An insipid move that violates the basic tenant of this type of position. White wants to play a hypermodern sort of game where he doesn't fix the pawn formation and hopes to get piece play against Black's defensive setup. Thus 4 d3 was more in the spirit, with Pirc-like play that gives White many more options to undermine Black's center. The problem with 4 d4 is that it fixes the pawn structure in an unfavorable way. Black plays logical, smooth moves that take advantage of the pawn formation.) **4...Bf5!** (Logical and strong. Not only does this prevent a direct shot against c2 but it further tightens the grip on e4) **5 0-0 Qd7** (Here we go!) **6 c4** (I checked 6 Ne5 but didn't like the look of things after 6...Nxe5 7 dxe5 Ne4 8 f3 Nc5 9 e4 dxe4 10 Qxd7+ Nxd7 11 fxe4 Bg4) **6...dxc4 7 Na3 Bh3 8 Nxc4 Bxg2 9 Kxg2 e6** (An interesting choice. Black opts to castle kingside and put his trust in his solid set up. Going over to the queenside does entail some risks, as can be seen from the line 9...0-0-0 10 Nce5 Nxe5 11 Nxe5 Qe8 (not 11...Qxd4 12 Qxd4 Rxd4 13 Be3! when the rook can't get back to d8, so 13...Rd5 14 Nxf7 Rg8 15 Rfd1±) 12 f3 Nd7 13 Nc4 e5 14 e4 exd4 15 Qxd4 Nc5 16 Qc3=) **10 b3 Be7 11 Bb2 0-0 12 Re1?** (White misses his chance to take over the d-file and allows Black a strong bind on the light squares. 12 Nce5 was correct, eg 12...Nxe5 13 dxe5 Qxd1 14 Rfxd1 Nd5 15 e4 Nb6 16 Rac1 c6 17 a4 a5

18 Bd4 Nd7 19 Nd2) **12...Qd5! 13 a3 Ne4 14 Qc2 f5 15 Kg1 g5 16 Red1** (All of White's pieces except the knight are on the queenside, unable to assist their king.) **16...f4** (Setting the stage for White's next move; I didn't like what was happening and thought I might sac a pawn to get some play going.) **17 Nfe5?! fxc3** (if 17...b5 18 Nxc6 Qxc6 19 Ne3 Qb7 20 Ng4 h5 21 Ne5 fxc3 22 f3 gxh2+ 23 Kxh2 Nd6 24 Qg6+ Kh8 25 Qxh5+ Kg7 26 Qg6+ Kh8 27 Rh1 winning) **18 f3** (My thinking was that with f3 I can kick the knight, tuck my king in the corner, get my rook onto the g-file, play the knight to e3 and kick the queen to d8) **18...gxh2+ 19 Kxh2 Rf4** (Played after a long think; it's original and brutal but Black didn't need to be so aggressive. Objectively the position must be in his favor, albeit messy and complicated. Herr Fritz likes 19...Nd6 20 e4 Qb5 21 d5 Nxe5 22 Nxe5 Nf7 23 f4 Nxe5 24 Bxe5 Qe8 25 Rd3 Qg6 26 Rg3 exd5 27 Qxc7 Rac8 28 Qxe7 Rc2+ 29 Rg2 Rxc2+ 30 Kxg2 gxf4+ 31 Kf2 Re8 32 Qc7 Qg3+ 33 Kf1 Qf3+ 34 Kg1 Qg4+) **20 Ne3** (At the time I thought this was the only move, as taking the knight looks horrible for White: 20 fxe4 Rxe4 21 Nf3 Qf5 22 Qd3 b5 23 Nce5 Nxe5 24 dxe5 g4 25 Rf1 Rd8 26 Nd4 Qxe5+ 27 Kh1 Bd6 28 Rf2 g3 29 Nf3 Qxb2 30 Rg1 Rg4 31 Qxb5 Rf8) **20...Rh4+** (The

VIRGINIA CHESS Newsletter

2001 - Issue #4

Editor:

Macon Shibut
8234 Citadel Place
Vienna VA 22180
mshibut@dgs.dgsys.com

Circulation:

Roger Mahach
7901 Ludlow Ln
Dunn Loring, VA 22027
rmahach@vachess.org



Virginia Chess is published six times per year by the Virginia Chess Federation. VCF membership dues (\$10/yr adult; \$5/yr junior) include a subscription to *Virginia Chess*. Send material for publication to the editor. Send dues, address changes, etc to Circulation.



control was game/2 hours and we were both getting short of time around here. The text may not be best as the rook isn't threatened and might have served well on the f-file) **21 Kg2 Qd8 22 fxe4 Qe8** (This protects c6 for a while and prepares to swing the queen over to the kingside. I was more concerned with 22...Qf8, eg, 23 Rf1 Qh6 24 Nf3 g4 25 Nxh4 Qxe3 I saw this far and didn't like it — but Fritz sees all! 26 Nf5 Qh3+ 27 Kg1 exf5 28 Qc4+ Kg7 29 d5+ Kh6 30 Rf2 Bh4 31 Rh2 Qe3+ 32 Kg2 Qg3+ 33 Kh1 Na5 34 Qd4 and White would win!) **23 Nxc6 bxc6 24 Rh1 Qg6 25 e5?** (missing the simple 25 Rxh4 gxh4+ 26 Kh1 Rf8 27 Rg1 Bg5 28 Ng4 h6 29 Qxc6 winning)

25 ..Qh5 26 Raf1 +- c5 27 dxc5 Rd8 28 b4 g4 (a time pressure blunder) **29 Rxh4 Bxh4** (29 ..Qxh4 gets mated after 30 Rh1 Qg5 31 Qxh7+ Kf8 32 Qh8+ Kf7 33 Rh7+ Kg6 34 Qg7) **30 Qc4 Bg5 31 Qxe6+ Kh8 32 Rh1 1-0**

Additional material from the 2001 Charlottesville Open, including a crosstable and lots of photos, can be accessed online at www.vachess.org/Charlottesville_Open.htm While you're surfing, check out the VCF site's other features, including a Virginia Scholastic Chess Association link (www.vachess.org/scholastic.htm) and our "Exclusive Content" section at www.vachess.org/content.htm

65th Annual

VIRGINIA CLOSED STATE CHAMPIONSHIP Sept 1-3, 2001

Mt Vernon Best Western

Rt 29 & Rt 250 Bypass, Charlottesville, VA 22901

Open to Virginia residents, military stationed in Virginia, and students attending Virginia colleges. 6-SS 30/90 SD/1. \$\$\$ 2,600 EF \$40 if rec'd by 8/24, \$50 at site; youth entry \$20 advance, \$25 at site, play for non-cash prizes. VCF memb req'd. \$10, \$5 jrs. Reg 10am-1pm, rds 1:30-7, 11-5, 10-3:45. ° -pt. byes available (limit two), irrevokable requests for byes in rds 5-6 must declare before round 3. Hotel \$64, 1-4, 804-296-5501. NS,NC,W. Enter: Michael Atkins, PO Box 6139, Alexandria, VA 22306 .

Open

\$600 - 300 - 200 - 150 Top Exp, A 100 each, plus trophy and title of State Champion to 1st; trophies to top expert and class A.

Amateur (Under 1800)

\$400 - 200 - 150 Top C, D, U1200 \$100 each Unr - \$100, plus trophy and title of State Amateur Champion to 1st, trophies to top C, D and under 1200.

Trophies and title of State Senior (over age 60), Woman and Junior (under 16) champions will also be awarded to the top-scoring qualifying player in each category, adding one point to the scores of players in the open section.



Annual VCF Business Meeting Saturday, Sept 1, 11am-1pm

Aside from the usual election of officers, committee reports, etc, this years' meeting will consider creation of a special Seniors membership category.

More info: <http://www.wizard.net/~matkins/closed.htm> or e-mail matkins@wizard.net

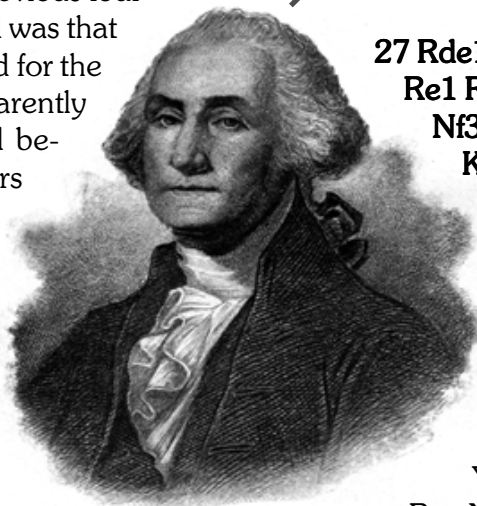
**George Washington Open***continued*

2nd-4th, at 5-1, with Adu, IM Larry Kaufman, & Floyd Boudreaux.

Two weeks beforehand, it suddenly looked as though there might not be a George Washington Open this year. I made an offhand stop at the hotel to check that the new manager and events manager had all the setup details from the previous tournaments. What I discovered was that we were not even scheduled for the June 16-17 weekend! Apparently communications had failed between the former managers the new ones, and now other events were marked in for "our" meeting rooms. Fortunately, with some haggling and negotiation we got an even better deal: use of the breakfast area, which held 10 players more than the meeting rooms. This turned out to be fortunate as a record 92 players turned out!

The profits from the record turnout will help to offset losses at the Fredericksburg Holiday Inn, past home of the Virginia Open. Hopefully a better site will be found in the Fredericksburg area for 2003 and beyond, but for next year the Virginia Open which will be held in Alexandria at this Mt Vernon site.

A sensational start by unrated Ivan Garzon was the talk of the first half of the tournament. Starting 3-0 with victories over opponents rated 1778, 1958 & 2229, he had me wondering if this player from Columbia was a GM in disguise. The second day, and tougher competition, brought Garzon back to earth. He ran up against seasoned masters Greg Achonolu and Floyd Boudreaux. Still, his 3° points should be good for a 2100+ rating — a nice baseline!



"He should have tried 17 Nxf7..."

SATHISH NATH - IVAN GARZON**PHILIDOR**

1 e4 e5 2 Nf3 Nf6 3 Nc3 d6 4 Bc4 Be7 5 h3 O-O
6 d3 c6 7 O-O b5 8 Bb3 Bb7 9 Re1
Nbd7 10 Be3 a6 11 Qe2 Qc7 12
Rad1 d5 13 exd5 cxd5 14 Bg5
Bd6 15 Bxf6 Nxf6 16 Nxe5 d4
17 Nb1 Rae8 18 f4 Nd5 19
Bxd5 Bxd5 20 Qf2 f6 21 Nf3
Bxf4 22 Qf1 Be3+ 23 Kh1 Qxc2
24 Re2 Qc7 25 b3 Qg3 26 Nbd2 f5
27 Rde1 Rc8 28 Rxe3 dxe3 29 Rxe3 Rfe8 30
Re1 Rxe1 31 Qxe1 Qxe1+ 32 Nxe1 Rc1 33
Nf3 Bxf3 34 gxf3 Rxe1+ 35 Kg2 Rd1 36
Kg3 Rxd3 37 Kf4 Kf7 38 h4 Kf6 39 h5
g5+ 40 hxg6 hxg6 41 Kg3 g5 42 b4
g4 43 a3 Rxf3+ 44 Kg2 Ke5 45 Kg1
Kf4 46 Kg2 Rb3 47 Kf1 Kf3 48 Ke1
Rd3 0-1

Other prizewinners included: =Top Expert - Chris Bush, Tim Rogalski, Leif Karell, Ruixin Yang & Paul Yavari; Top A - Robert Bucholtz; Top B - Nikolai Yakovenko, William Carroll, Grant Fleming & Alexander Kane; Top C - Ettie Nikolova, Illinna Nikolova, Stephen Graziano, Andrew Tichenor, Frank Huber & Victor Smith; Top D - Joshua Wylie, Chris Fitzgerald & Gary Taylor; Top U1200 - Louis Helly & Jeffrey S Thode; Top Unrated - Ivan Garzon; Top Upset - Mike Turpyn, for a 541 pointer. Had the prize been cumulative (sum of all "upset points" over the whole event) Ettie Nikolova would have won with a remarkable 1352 and a performance more than 500 points higher than her posted rating.

Your *Virginia Chess* mailing label provides the information you need to make sure your membership stays current!

Av Expires 12/31/2000
Joe Chess Player
64 Kings Indian Highway
CaroKan, VA 22222-2222

Please make note of your expiration date. At least 30 days beforehand, take the time to renew. If you're online you can renew by email. Contact Roger Mahach, remahach@vachess.org You can also ask to be put on an email notification list for alerts when your membership is due to lapse.



FISCHER vs MATHEWS 1964

by Henry J White

Reprinted with permission from the June 2001 edition of PALMETTO CHESS, the quarterly publication of the South Carolina Chess Association

A ROUND OF GOLF with Tiger. Batting against the "Big Unit." One-on-one with Jordan. Sportsmen dream of the opportunity to compete against the great ones. Unlike other sports, amateur chess players get the chance to play against the game's biggest stars when they give simultaneous exhibitions. Imagine playing against a legend like Bobby Fischer, whose greatness was especially evident in 1964 when he ran through the field of the United States Championship with a perfect 11-0 score. After such a dominating performance, the chess world expected Fischer to play in the Interzonal set to begin in Amsterdam on May 20, 1964. Because of various complaints about FIDE, Fischer instead conducted a series of multi-board simultaneous exhibitions across the country.

On March 5, 1964, Fischer's tour brought him to Richmond, Virginia, where a future South Carolina chess champion was among the simul's participants. Spencer Mathews was a graduate student at the University of Virginia in 1964. He moved to South Carolina in 1967 and won our state championship in 1969. Since arriving in South Carolina, Mathews has perennially been one of the highest rated players in the state. He is currently Chair of the Psychology Department at Converse College in Spartanburg, SC..

Mathews fondly remembers the Fischer simul as follows:

The exhibition was to begin at 8:00 pm; but Fischer's plane was quite late because of snow at his departure point. I'd driven to Richmond with a fellow graduate student, John Wright,

continued

ARLINGTON OPEN

Oct 13-14, 2001

FIDE Rated

George Mason University
Professional Center
(The Old Law School)
3401 North Fairfax Drive
Arlington, Virginia

(Across from Virginia Square Metro)

5-SS, G/100. \$\$1800 b/60 (top 3 guaranteed): \$500-300-200, top X, A, B, C, D, U1200 each \$120, Unr \$80. EF \$40 if rec'd by 10/6, \$50 at site. Reg 10/13 9-9:45, rds 10-2-6, 10-2:30. One ° pt bye available, rd 4/5 bye must declare before rd2 and is unrevokable. Make entries payable to Michael Atkins and send to: PO Box 6139, Alexandria VA 22306. For more info check www.wizard.net/~matkins/aopen.htm or email matkins@wizard.net

15 Grand Prix Points

Linares →

Hastings →

Zürich →

Print beautiful chess diagrams and algebraic figure notation with the **Linares, Hastings or Zürich TrueType chess fonts** and any Windows or Macintosh word processor. Used by *American Chess Journal* and many other chess magazine and book publishers. Scalable to any size, 6 diagram borders, 50 annotation symbols, bold, italic, PostScript and a nice User's Guide. Compatible with Chess Assistant, ChessBase, Zarkov, BOOKUP for the Mac and other chess programs. Fonts are \$29 each, two for \$49 or all three for \$59 postpaid. Specify PC or Mac and send check (or Mastercard/Visa information) to:
Alpine Electronics, 526 W. 7th, Powell, WY 82435
Money-Back Guarantee

∞ ♞ ± ± □ △ ▢ ⊞ ⊞ ⊞ ⊞ ⊞ ⊞ ⊞ ⊞ ⊞ ⊞

Many other game diagram fonts are available. Send a postcard (or email to smiths@mail.nwc.whecn.edu) for more information and sample printouts.



who also played. Several other members of the Charlottesville Chess Club had also traveled to play. John and I volunteered to go to the Richmond airport and wait for Fischer's plane. The result of this was that we had him to ourselves, so to speak, for the ride back across town. He was not very talkative except about chess. I suppose expressing himself on other topics might have seemed risky; but when he began to talk about chess his conversation became much more intricate and precise as compared with essentially one word answers or expressions of non-interest to questions that touched on other matters.

Even though the exhibition didn't begin until nearly 11:00 pm Fischer did everything he promised, beginning with a short lecture about a game he'd recently won in an international tournament and then proceeding to play, I think it was, 44 Virginians who'd waited for him to arrive. We didn't finish until about 3:00 in the morning.

Fischer was genial and self possessed in spite of the fact that he must have been dead tired, having had considerable difficulties with his flight arrangements and beginning the evening at 11:00 pm. It's a credit to the Virginia players of the time that no one left when we learned that he would be so late.

There were only two incidents that I recall that had some humor to them. One elderly Virginia player didn't understand the rules of simul play (don't move until the exhibitor gets to your board; then you *must* move). Fischer had announced that he would allow everyone two passes, but the player in question kept waving him by move after move. Finally Fischer waited for about a minute for that opponent to move and said, "C'mon, fella, move. This ain't postal chess." But there was no venom in his tone. On another nearby board things came down to an ending where Fischer had Q+P against Q. I thought we might be there hours more. But the Virginia player asked, "Can you win this?" and Fischer said "Yes," at which point the Virginian resigned.

When I was at UCLA on sabbatical in 1997 I saw John Donaldson's book on Fischer's simultaneous tour (*A Legend on the Road*). I quickly thumbed to the relevant section to see the account of the Richmond exhibition and found the following quote: "Everyone recollects that he (Fischer) lost three games — to Charles Powell, Julian Allen, and someone else but no one is sure who. ..." [NM Macon Shibut, editor of the *Virginia Chess Newsletter*]. That's the story of my life. I'm the one no one can remember!

Below is Mathews' fine win against Fischer, with notes by Fritz 5.32. The game is a Sicilian Dragon. In *My 60 Memorable Games* Fischer described his basic plan for slaying the Dragon: "pry open the KR-file, sac, sac . . . mate!" Watch how he tries to apply this approach against Mathews.

BOBBY FISCHER - SPENCER MATHEWS

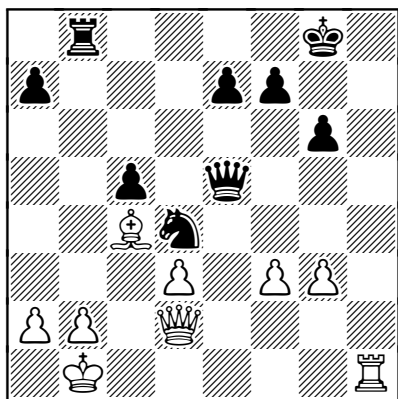
SIMULTANEOUS EXHIBITION,
RICHMOND CHESS CLUB 1964

SICILIAN

1 e4 c5 2 Nf3 d6 3 d4 cxd4 4 Nxd4 Nf6 5 Nc3 g6 6 Be3 Bg7 7 f3 0-0 8 Qd2 Nc6 9 0-0-0 d5 10 Nxc6 bxc6 11 h4 (11 Bh6 Be6 12 exd5 Nxd5 13 Bxg7 Kxg7 14 Bc4 Qc7 15 Bxd5 cxd5 16 h4 h5 17 Nxd5 Bxd5 18 Qxd5 Rfc8 19 Rd2 Rab8 20 b3 Rd8 21 Qc4 Qe5 22 c3 Qe3 23 Rd1 Rxd2 24 Rxd2 Rd8 0-1 Nikovits-Pirisi 1992; 11 exd5 cxd5 12 Nxd5 Nxd5 13 Qxd5 Qc7 14 Qxa8 Bf5 15 Qxf8+ Kxf8 16 Rd2 h5 17 Bc4 Bxb2+ 18 Kxb2 Qxc4 19 Bh6+ Kg8 20 Rd8+ Kh7 21 Bd2 Qxc2+ 22 Ka3 Qc5+ 23 Bb4 Qe3+ 24 Kb2 Qb6 0-1 Reduan-Devry 1997) **11...Qa5** N (11...Be6 12 e5 Nd7 13 Bh6 Bxe5 14 Bxf8 Qxf8 15 f4 Bf6 16 g3 Rb8 17 Bh3 Bxh3 18 Rxh3 e6 19 a3 Nb6 20 Qd3 Nc4 21 b4 Rxb4 22 axb4 Qxb4 23 Rd2 Bxc3 24 Rf2 0-1 Sorri-Arnaudov 1967) **12 e5** (12 exd5!? Rb8 13 Bd4=) **12...Nd7** (12...Nh5!?) **13 Bh6** (13 f4!?) **13...Bxe5** (13...Nxe5? 14 h5±) **14 Bxf8 Nxf8 15 h5** (15 f4 Bf6 16 Ne4 Qxa2 17 Nxf6+ exf6 18 Qb4) **15...Rb8 16 Re1** (16 Rh4!?) **16...d4** (16...Bg3!? 17 hxg6 Nxg6 -) **17 Rxe5 Qxe5 18 Ne4 Bf5 19 Bd3 Bxe4 20 Bxe4 c5 21 hxg6 hxg6 22 Bd3 Ne6 23 Bc4 Nf4 24 g3 d3 25**



cxd3≤ (25 Bxf7+!? Kg7 26 Bb3 [26 Qxf4??
Qxb2+ 27 Kd2 Qxc2+ 28 Ke1 Qe2#] 26...Ne2+
27 Kb1 dxc2+ 28 Qxc2=) **25...Ne2+ 26 Kb1**
Nd4≥ (Better 26...Nxc3, eg 27 Rg1 e6≠)



27 Qh6?? (27 f4 Qf6 28 Qh2≥) **27...Rxb2+! 28**
Kxb2 Nf5+ 0-1 (29 Kb3 Nxc6 30 Rxc6 Qxc3 -)



17th Emporia Open

October 6-7 2001

Greensville Ruritan Club, Ruritan Rd
(Off of Hwy. 58 West of Emporia)
Emporia, VA 23847

5-SS, 40/90, SD/60. EF \$35 if rec'd by 10/3, \$40 at site. \$\$G 500 + 400 class prizes b/5: 250-150-100, X (if no X wins place prize), A, B, C each \$75. D, E each \$50. Reg 9-9:45 am. Rds 10-3-8, 9-2. Significant refreshments provided with EF (no additional charge.) VCF membership required (\$10/yr) and available at site. NC, W. For more info contact Virginia Chess Federation, c/o Woodrow Harris, 1105 West End Drive, Emporia, VA 23847, or email fwh@3rddoor.com



CHESS IN RICHMOND

<http://www.richmondchess.com>

The Kaïssa Chess Club now holds monthly USCF rated quads. The entry fee is \$1, which covers the rating fee. Each quad begins play at 6:30pm on the first Thursday of each month, with subsequent rounds played on subsequent Thursdays. The time control is game/75 minutes. If you would like to play in a KCC quad, then please be at the Virginia Museum of Fine Arts at 6:15pm to sign up. Membership in the club is free. For more information, call club President Angelo Crisci at 804-560-5476 (email angelocrisci@cs.com), or Vice-President Brian Sumner at 804-304-6369 (bsumner@planet2000.com)

UPCOMING USCF RATED EVENTS:

Thursday Nights Quads

Kaïssa Chess Club Quick Championship
August 18, 2001

Kaïssa Chess Club 2001 Championship
Sep-Nov, 2001

Kaïssa Chess Club Open VIII tournament
September 22, 2001

Kaïssa Chess Club Open IX tournament
October 20, 2001

Kaïssa Chess Club Team Championship
November 10, 2001





Mark Bland, of Virginia Beach, has written a chess-based novel. Due for publication shortly, the book is synopsised as follows on its back cover: "THE FOUR CHESSMEN takes the reader on a trip through life and time. The game of chess becomes one of the pleasures along the road. The setting is the 20th century, but it acts only as a backdrop to hold time in place while individuals race to find their happiness and success in its boundaries." Here Mark provides an amplified preview exclusively for VIRGINIA CHESS readers.

The Four Chessmen will not teach the reader any opening theory, middlegame planning, or endgame technique; rather, it sheds light on the reason for playing the game. "Why do I continue to play this game?" Every chessplayer has echoed this cry at one time or another. Whether rated 1200 or 2400, the thrill of the win and the devastation of the 1088 remain the same. To draw, of course, is like kissing your sister. So why do we continue? The answer lies in the nature of man's quest for pleasure. *The Four Chessmen* takes the reader through the quest while using the game of chess to hold time long enough to examine the answer.

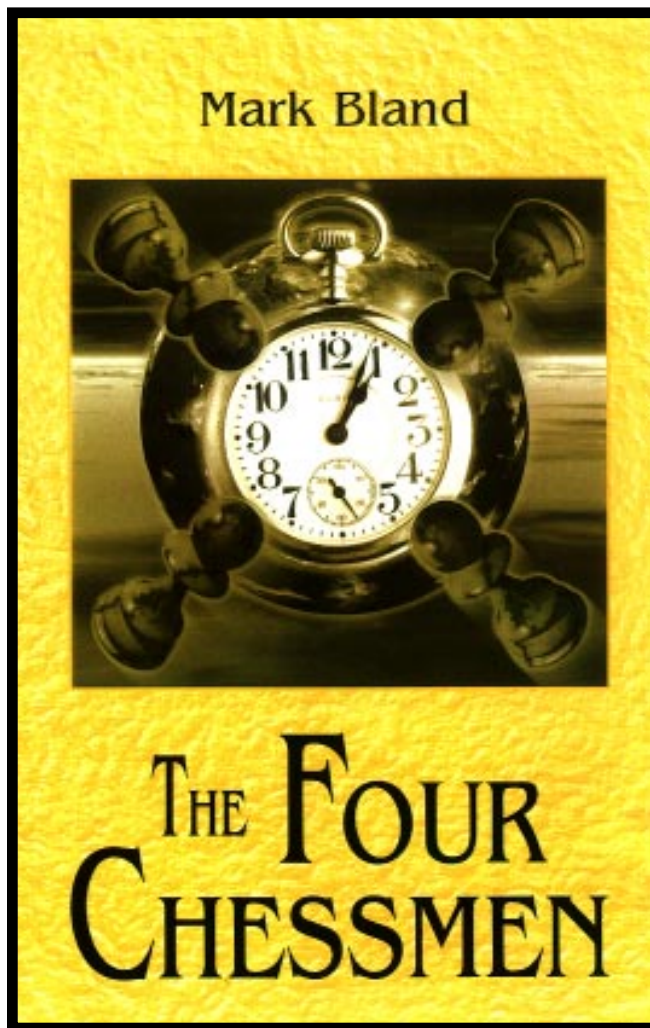
The plot is simple: four elderly men are planning to go to the World Open in Philadelphia. From varied backgrounds, they have been united through their mutual interest in chess. Each player has his own unique approach to the game, and each represents an ideal by which to achieve success in life and in chess. Chess has become the gift of the moment for the four men.

The cycle of life is alluded to as a chess game throughout the story. For example, in chapter two, Matt Ballister has reached thirty years of age and his opening is over.

His game plan was set, the opening was over. To attack or wait, to take or sacrifice, or to follow the well used paths of those who have already succeeded had been decided. Was too much time lost on trivial moves? Did the clock show enough time to finish the game without rushing? Was the position at hand satisfactory or merely an illusion of the time spent on what one thought was reality?

By retirement, Matt has ended the middle game.

The middle game was over. Mistakes had been made and pieces had fallen, changing the perspective of the whole. Moves transpired, plans changed unexpectedly, and the play became active. The ending was in sight, but the destiny of it unknown. More time had been taken from the clock. Too many traps still lay in wait to predict the outcome.



While at Sunnydale, a retirement home, Matt reaches the end game.

Now in the end game, the final picture became more clear. The end was in view. Only a few pieces left on the board. The final battle begins. The fatigue of the opening and middle game has marked the body and mind. The price of the whole has paid its toll. One bad move now and the game will be lost. Endurance and care can conquer, but poor judgment will surely bring death. Little time remains on the clock.

The trip through life is the game, but the pleasure that the moment brings becomes the nature that allows us to continue. We share this nature and see the process which brings it about in *The Four Chessmen*.

Order *The Four Chessmen* directly from Mark Bland, 3624 Kingdom Ct, Va Beach, VA 23452 for \$11, shipping included. Copies for chessplayers will be signed by the author.



Book Review...

Chess On The Net

Everyman Chess. Soft cover, 127pp. List \$15.95

One of the truisms of the net economy is that the first to market will usually be the most successful. We see the resulting emphasis on “branding” in action when we think of Yahoo, Amazon, and America Online. Does this concept apply to chess as well? Most certainly it does. Mark Crowther’s *The Week in Chess* is the ultimate source for chess news, games, and reportage on a global scale. Club Kasparov has a flashier web site with more content, yet somehow it fails to capture our attention the way TWIC does.

With the release of *Chess On The Net*, his first book, Crowther offers a glimpse into a successful web endeavor, as well as provides the first manual to cover *all* aspects of Chess In The Digital Age: email, search engines, playing programs, databases, zip files, etc. Indeed, although similar books have been published, none cover as much ground as does Crowther.

The title is a bit misleading as not all of the book is about chess on the net. Crowther covers many different aspects of chess in the ‘wired’ age, from getting set up on a net-enabled PC, to what sites to visit, where to shop, where to play online, how to use online clients, chess databases, different chess file type and where to get your chess news. *Chess On The Net* does a good job of covering a lot of ground in an organized and well-written fashion.

I quite enjoyed Crowther’s reviews of the different chess related web sites, which is nice since they comprise more than half of the book! Crowther rates sites with respect to their presentation, content, user friendliness (critical for me as a web master!) and overall impression. There is so much to surf these days, one would hate to miss some of the gems unearthed here! I found that I agreed with almost all of Crowther’s recommendations.

Chess On The Net would offer even greater value if this print edition were tied into a web site or service to keep the links current. The Web is so dynamic that books about it can be outdated by the time they’re published. An electronic source for up-to-date ‘bookmarks’ would also make surfing a lot easier, eliminating the need to type unwieldy URLs.

Another criticism: whenever the Internet is utilized for transactions there should be some mention made of security. Every cyber-chessplayer ought to have an anti-virus tool on his PC. Always ensure that the vendor you’re about to send your credit card number is really in business.

And don’t trust people you don’t know, even if they claim to be a GM from Russia. (Ask me about it sometime!)

This book focuses mostly on Windows machines, and indeed the majority of chess software is developed for that platform. If you’re a Mac or Unix user there won’t be much technical stuff for you here, though you will still find the web reference sections useful.

Bottom line? This is a great book to give to folks who are not so comfortable with their PC or for getting set up for chess on the Net. I wish I had this book three years ago when it seemed that every chess-playing friend was jumping online and needed my help!

— Roger Mahach

Roger Mahach is the Virginia Chess Federation webmaster. Visit his chocked-full VCF web page at www.vachess.org



WEDNESDAY NIGHT QUICK CHESS!

1st Wednesday of every month
Tidewater Comm. College, Virginia Beach
Princess Anne Road, Virginia Beach in the Cafeteria
(Kempsville Bldg D)

Game in twenty minutes - notation not required.
USCF Quick rated! Reg: 7:00-7:20 pm, rd 1 at 7:30.
Entry fee: Only one buck!



This is a column devoted to Chess Playing Seniors. Let's say it's anyone at least 50 who can play (learn) chess. Call me at (703) 591-2106 and inform me of Senior Chess events, notable performances, interesting games, etc. It is worth mentioning that this year some fifty-eight million baby boomers will turn 55. Also, during the next ten years eighty-one million Americans will reach 65. What all this means is that the fastest growing segment of the US population is seniors; perhaps organizations other than AARP should take note of this.

Upcoming Senior Chess events: The Northern Virginia Senior Olympics is somewhat late this year. The chess portion will be held at Lee District Park on the October 2-3, the first day starting at 10:30am. Early registration is still \$5 and you may obtain the forms by calling (703) 359-2487 or 838-4831.

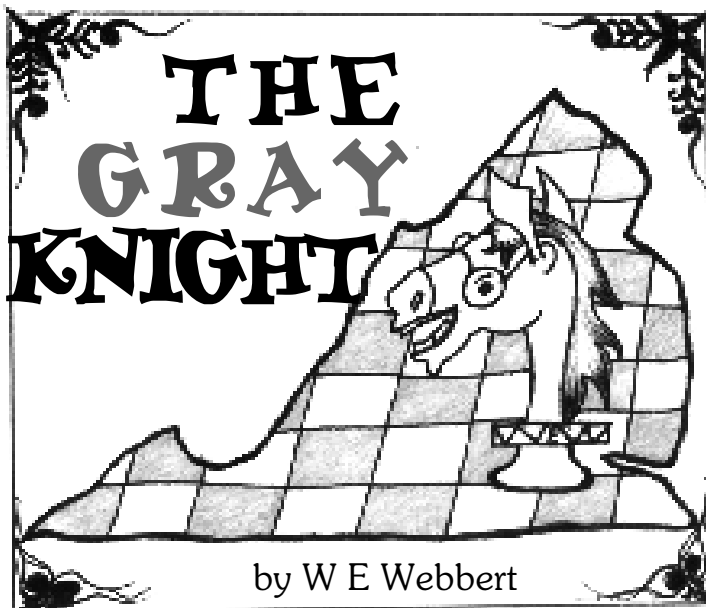
Senior Chess Results: The Webbert Gambit tournament, held annually at the Arlington Seniors Chess Club (ASCC), was won by Mr Ralph Belter (who also directed) with a score of 6-2. Second was Mr Bill Sickler, and Messrs Kapoor and Fantu tied for third (at 5-3). The awards were presented June 18 at the Madison Seniors Center.

Senior games portion: This time we are featuring a couple of Senior vs Senior games where the combined age of the four participants easily exceeds 240 years! Notes by YHR.

DAN TOWNE - JEROME LINDSAY
DC CHESS LEAGUE 2001

FRENCH

1 e4 e6 2 d4 d5 3 Nc3 Bb4 4 Nge2 dxe4 (A somewhat obscure book line where White may give up as many as two pawns for the attack with development.) **5 a3 Bxc3+ 6 Nxc3 f5 7 f3 exf3 8 Qxf3 Qh4+** (...Qxd4 is also played) **9 g3 Qg4 10 Qf2 Nf6 11 Be2 Qg6 12 Bf4 Qf7 13 0-0-0 Nd5?** (More development would benefit Black, eg 13...Nc6) **14 Nxd5 exd5 15 Bb5+ c6 16 Rhe1+ Be6 17 Rxe6+ Kd7 [17...Qxe6 18 Re1 Qxe1+ 19 Qxe1+ Kf7 20 Bd3 Re8 21 Qf2 ± ed] 18 Rd6+**



Kc8 19 Bd3 Nd7 20 Re1 g6 21 Rde6 Nf6 22 Re7 Qf8 23 Bd6 Qh6+ 24 Kb1 Ne4 25 Bxe4 dxe4 26 R1xe4 g5? (26...fxe4 allows Qf7 and mate soon) **27 Qxf5+ 1-0**

W E WEBBERT - DR CONSTANTIN RUSSU
ARLINGTON SENIORS CHESS CLUB 2001
BIRD/LARSEN

1 f4 e6 2 Nf3 Nf6 3 b3 d5 4 e3 c5 5 Bb2 Nc6 6 Bb5 Be7 7 0-0 0-0 8 Nc3 d4 9 exd4 cxd4 10 Ne2 Qb6 11 Bd3 (awkward but not uncommon in this line) **Rd8 12 Qe1 a5 13 a3 h6 14 Qf2 Bc5 15 Ne5 Qc7?** (loses a pawn) **16 Nxc6 bxc6 17 Bxd4 Bxd4 18 Nxd4 e5? 19 fxe5 Qxe5?** (loses an exchange plus) **20 Nxc6 1-0**



CENTER DIRECTOR:
NATIONAL MASTER
RUSSELL POTTER

THE MID-ATLANTIC CHESS INSTRUCTION CENTER
(Chess Lessons - Individual, Group, Phone & Internet)

P.O. Box 5305
Roanoke, Virginia 24012

Telephone:
(540) 362-8886

e-mail: chessmr@att.net  ICC Handle: "NEPTUNA"

• Top Quality Chess Instruction For a Fair Price Since 1967 •

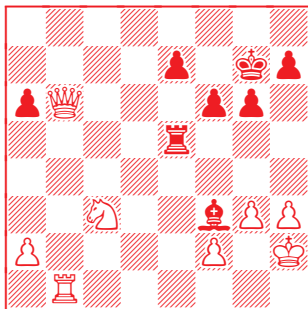


COMBINATION QUIZ

Join two-time state champion Rusty Potter as we review a dozen of the most memorable tactical moments from his long and eventful chess career. All notes are provided by Rusty. **The solutions are on page 17!**

CARLOS GOROSTIAGA - RUSTY POTTER
1979 GMU OPEN 1979
QUEEN'S PAWN

1 d4 Nf6 2 Nf3 c5 3 c3 cxd4 4 cxd4 g6 5 Nc3 Bg7 6 e4 d6 7 Bb5+ Nfd7 8 O-O O-O 9 Be3 Nc6 10 Qd2 a6 11 Bxc6 bxc6 12 Bh6 Rb8 13 Bxg7 Kxg7 14 e5 dxe5 15 dxe5 Nxe5 16 Qf4 Nxf3+ 17 Qxf3 Rxb2 18 Qxc6 Bb7 19 Qc5 Re8 20 Rab1 Rxb1 21 Rxb1 Qd7 22 h3 Rc8 23 Qe5+ f6 24 Qg3 Rc5 25 Qe3 Rg5 26 g3 Re5 27 Qb6 Bf3 28 Kh2

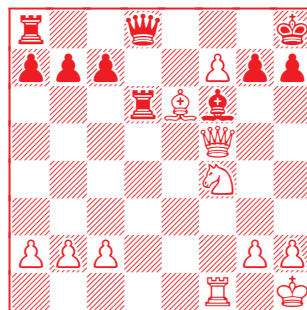


#1 - Black to Play (mate in 2)

Carlos Gorostiaga was the highest-rated player in Lynchburg for years and was a frequent opponent of mine during the 70's. A tough man to beat, he was hoping here for a long drawn-out game with chances to hold this pawn-down ending. What move brought this contest to a somewhat more abrupt conclusion?

RUSTY POTTER - ANDREW MARGRAVE
1974 WESTERN VA OPEN
BLACKMAR-DIEMER

1 d4 Nf6 2 Nc3 d5 3 e4 dxe4 4 f3 exf3 5 Nxf3 Bf5 6 Bc4 e6 7 O-O Nbd7 8 Qe2 Bd6 9 Bg5 Qc8 10 Ne5 Nxe5 11 dxe5 Bc5+ 12 Kh1 Nd7 13 Rad1 O-O 14 Rxf5 exf5 15 e6 Nf6 16 exf7+ Kh8 17 Be6 Qb8 18 Qe5 Be7 19 Qxf5 Rd8 20 Rf1 Rd4 21 Ne2 Rd6 22 Bxf6 Bxf6 23 Nf4 Qd8

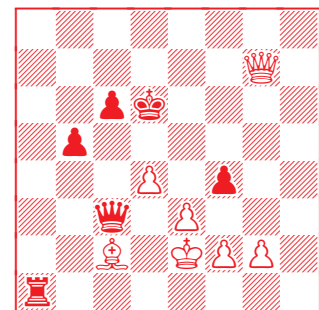


#2 - White to Play (mate in 4)

Back in the 70's, Andrew Margrave was the original pioneer who opposed smoking in VCF tournaments. Although he was repeatedly vilified by the Richmond-based leadership of the VCF at that time, Andrew's views ultimately prevailed; over 90% of the rated tournaments sponsored by the VCF are now smoke-free. How was I able to "smoke" him here in exactly 4 moves? (Careful, there are some near misses...)

RUSTY POTTER - FRANK CREASEY
RVCC LADDER 1977
SLAV

1 d4 d5 2 c4 c6 3 Nc3 Nf6 4 Bg5 dxc4 5 e3 e6 6 Bxc4 Nbd7 7 Qf3 Be7 8 Nge2 O-O 9 O-O O Nd5 10 h4 b5 11 Bd3 h6 12 Ne4 N7f6 13 N2g3 Nb4 14 Bb1 Qd5 15 Bxf6 Qc4+ 16 Nc3 Bxf6 17 a3 a5 18 Nh5 Be7 19 Qg3 g5 20 hxg5 hxg5 21 Qe5 f6 22 Qe4 f5 23 Qe5 Kf7 24 Nf4 gxf4 25 Rh7+ Ke8 26 axb4 axb4 27 Qc7 Bd7 28 Rdh1 bxc3 29 Rxe7+ Kxe7 30 Rh7+ Rf7 31 Rxf7+ Kxf7 32 Qxd7+ Kg8 33 bxc3 Qxc3+ 34 Kd1 Qb3+ 35 Bc2 Ra1+ 36 Kd2 Qb4+ 37 Kd3 Qa3+ 38 Ke2 Qc3 39 Qxe6+ Kh8 40 Qf6+ Kg8 41 Qg6+ Kf8 42 Qxf5+ Ke7 43 Qg5+ Kd7 44 Qg7+ Kd6



#3 - White to Play (mate in 4)

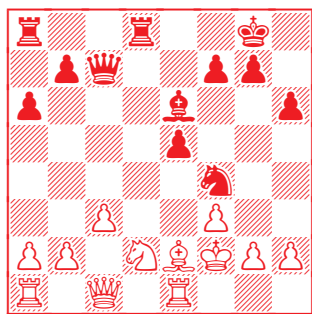
My old buddy Frank Creasey and I played each other many times in rated and casual events in the 70's. Frank was President of the Roanoke Valley Chess Club. He organized and ran



many club events for over a decade. He was also the usual TD of the prestigious Va Masters Invitational tournament series. An ace computer repairman, Frank has since relocated to Little Rock. In this cut and thrust game, White has had a couple of near-death experiences. But here, how do I throw a four-move monkey wrench into Black's PC?

M WRIGHT - RUSTY POTTER
1978 TENNESSEE OPEN
SICILIAN

1 e4 c5 2 Nf3 d6 3 d4 cxd4 4 Nxd4 Nf6 5 Nc3 a6 6 Be2 e5 7 Nf3 Qc7 8 O-O Be7 9 Bg5 Nbd7 10 Nh4 h6 11 Be3 Nb6 12 Nf3 Be6 13 Nd2 O-O 14 f3 d5 15 exd5 Nfxd5 16 Nxd5 Nxd5 17 Bf2 Rfd8 18 c3 Bc5 19 Qc1 Nf4 20 Re1 Bxf2+ 21 Kxf2



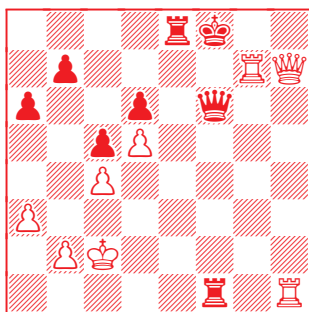
#4 - Black to Play (mate in 5)

A crisp Sicilian finish, that helped me tie for first place in the Tennessee Open.

R FASANO - RUSTY POTTER
1974 WORLD CLASS CHAMPIONSHIPS
ENGLISH

1 c4 e5 2 Nc3 Nc6 3 g3 f5 4 Bg2 Nf6 5 e3 f4 6 exf4 exf4 7 d4 ffg3 8 hxg3 Bb4 9 Ne2 d6 10 a3 Bxc3+ 11 Nxc3 O-O 12 Qd3

Ne7 13 Bg5 h6 14 Be3 c6 15 d5 c5 16 Ne4 Bf5 17 Nxf6+ Rxf6 18 Be4 Qd7 19 O-O-O a6 20 g4 Bxe4 21 Qxe4 Re8 22 g5 Ng6 23 Qc2 hxg5 24 Bxg5 Rf5 25 Rdg1 Qf7 26 f4 Nxf4 27 Qh2 Nh5 28 Bh6 Qf6 29 Bxg7 Nxg7 30 Qh7+ Kf8 31 Rxg7 Rf1+ 32 Kc2



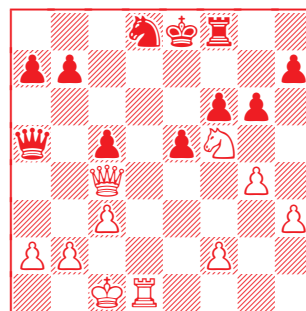
#5 - Black to Play (mate in 6)

Winning this game helped me to gain second place in this event and pocket \$500 in the process. A large crowd gathered in a knot around my board to watch the tense slugfest. The more they studied the board, the more it looked to them like my opponent would escape my checks and win. Fortunately for me, the spectators were wrong — but there is only *one* correct solution here...

RUSTY POTTER - R IMBRAGUGLIO
1968 NEW ORLEANS OPEN

SICILIAN/KINGS INDIAN ATTACK
1 e4 c5 2 Nf3 Nf6 3 d3 d5 4 Nbd2 Nc6 5 g3 Bg4 6 h3 Bh5 7 c3 dxe4 8 dxe4 Nxe4 9 g4 Nxd2 10 Bxd2 Bg6 11 Qa4 Qc7 12 Bf4 Qb6 13 O-O-O f6 14 Bc4 Bf7 15 Bxf7+ Kxf7 16 Qc4+ Ke8 17 Rhe1 Rd8 18 Qe6 Qa5 19 Bd6 Rd7 20 Nh4

Nd8 21 Qc4 e5 22 Nf5 g6 23 Bxf8 Rxd1+ 24 Rxd1 Rxf8



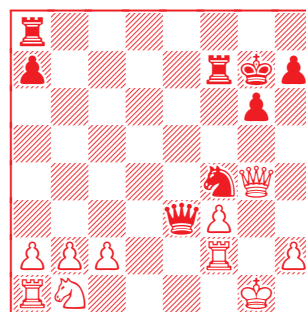
#6 - White to Play (win a rook)

On this particular trip to "the Big Easy" I picked up a rook as a souvenir at a tournament in the French Quarter...

KEITH VICKERS - RUSTY POTTER
LCA \$500 WARMUP 1976

RÉTI

1 Nf3 d6 2 g3 g6 3 Bg2 Bg7 4 O-O e5 5 e4 Nc6 6 d3 Nge7 7 Be3 O-O 8 Qd2 f5 9 Bh6 f4 10 Bxg7 Kxg7 11 d4 Bg4 12 dxe5 Bxf3 13 exd6 Bxg2 14 dxe7 Qxe7 15 Qc3+ Rf6 16 Kxg2 Qxe4+ 17 f3 Qe2+ 18 Rf2 Qe3 19 Qb3 Nd4 20 Qxb7 ffg3 21 Qxc7+ Rf7 22 Qxg3 Ne2 23 Qg4 Nf4+ 24 Kg1



#7 - Black to Play (win the queen)

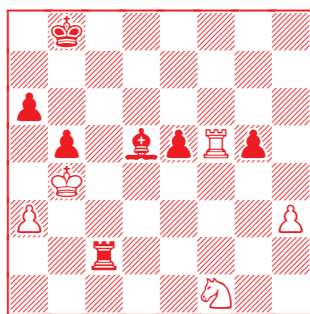
My opponent in this game was Keith Vickers - a constant foe of mine in the 70's. He later went on to become a master after



relocating to San Francisco. Here, Keith hopes that my two-pawn sacrifice will only be good enough for a draw by perpetual check. What cute finish relieved him of this illusion.?

T NEWMAN - RUSTY POTTER
WINSTON-SALEM TORNAO 1974
SICILIAN

1 e4 c5 2 Nf3 d6 3 d4 cxd4 4 Nxd4 Nf6 5 Nc3 a6 6 Bg5 e6 7 f4 Be7 8 Qf3 Qc7 9 O-O-O Nbd7 10 Bd3 h6 11 Bh4 g5 12 ffg5 Ne5 13 Qe2 Nfg4 14 h3 hxg5 15 Bg3 Nxd3+ 16 Qxd3 Ne5 17 Bxe5 dxe5 18 Qg3 Bd7 19 Rhf1 O-O-O 20 Nb3 f6 21 Qe3 Kb8 22 Rd2 Bc8 23 Rfd1 Rxd2 24 Nxd2 b5 25 Ne2 Bb7 26 Qb3 Rc8 27 Nc3 Qc6 28 a3 Qb6 29 Na4 Qa5 30 Nc3 Bxa3 31 Qxa3 Qxa3 32 bxa3 Rxc3 33 Rf1 f5 34 Kb2 Rg3 35 exf5 exf5 36 Rxf5 Rxc7 37 Nf1 Rxc2+ 38 Kb3 Bd5+ 39 Kb4



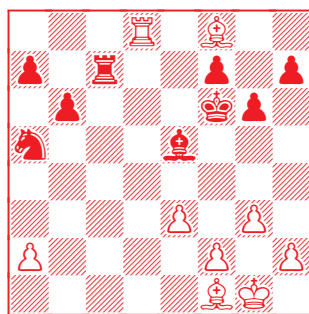
#8 - Black to Play
(win a rook or mate)

Another long endgame with reduced material — or so my opponent thought. What efficient sequence proved otherwise?



RUSTY POTTER - T FORE
1972 VA STATE CHAMPIONSHIP
NEO-GRÜNFELD

1 d4 Nf6 2 c4 g6 3 Nf3 Bg7 4 g3 d5 5 cxd5 Nxd5 6 Bg2 O-O 7 O-O Bd7 8 Nc3 Nxc3 9 bxc3 c5 10 Ne5 Nc6 11 Nxd7 Qxd7 12 e3 cxd4 13 cxd4 Rac8 14 Qa4 Rc7 15 Rd1 Rd8 16 Ba3 b6 17 Rac1 Na5 18 Qxd7 Rxd7 19 Bf1 e5 20 Rxc7 Rxc7 21 dxe5 Bxe5 22 Rd8+ Kg7 23 Bf8+ Kf6



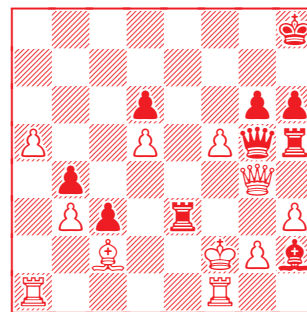
#9 - White to Play
(win a bishop or mate)

A long grind seems to lie ahead; my bishop-pair against his outside pawn majority on the queen wing. Surely I can't make anything out of his mildly-exposed king position — or can I?

BRUCE RIPLEY - RUSTY POTTER
SKITTLES 1978
BENONI

1 d4 Nf6 2 c4 c5 3 d5 e6 4 Nc3 exd5 5 cxd5 d6 6 Nf3 g6 7 Bg5 Bg7 8 e3 h6 9 Bh4 a6 10 Nd2 b5 11 Be2 O-O 12 Qc2 Qc7 13 Rd1 Re8 14 Bg3 Nbd7 15 a4 b4 16 Nce4 Nxe4 17 Nxe4 Ne5 18 O-O Bf5 19 f3 c4 20 b3 c3 21 Bxe5 Rxe5 22 Bd3 Bxe4 23 fxe4 Qe7 24 Qf2 Re8 25 Rde1 Rh5 26 Bxa6 Be5 27

h3 Rf8 28 Bd3 Qg5 29 Qf3 Kh8 30 Bc2 Bg3 31 Ra1 f5 32 a5 Re8 33 exf5 Rxe3 34 Qg4 Bh2+ 35 Kf2

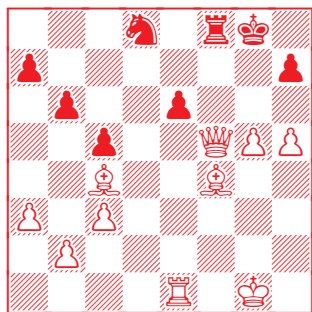


#10 - Black Play
(win big material or mate)

Lynchburg's #2 player for years has been the easy-going barber, Bruce Ripley. In this wild game, Bruce has bravely gobbled pawns and hasn't worried too much about his own king's safety. His punishment wasn't easy to deliver, but I was finally able to find a way to give his king a shave that was a bit too close for comfort...

RUSTY POTTER - KEITH VICKERS
1974 WESTERN VA OPEN
PIRC

1 d4 Nf6 2 Nc3 g6 3 e4 d6 4 f4 Bg7 5 Nf3 O-O 6 Bd3 c5 7 dxc5 dxc5 8 O-O e6 9 Qe1 Nc6 10 Be3 b6 11 Rd1 Qe7 12 a3 Rd8 13 Bc1 Bb7 14 e5 Nd5 15 Ne4 Nc7 16 Nd6 Ne8 17 Nxb7 Qxb7 18 Be4 Rxd1 19 Qxd1 Qc7 20 h4 Rd8 21 Qe1 Nd4 22 Ng5 f5 23 exf6 Bxf6 24 c3 Bxg5 25 ffg5 Nf5 26 Bf4 Qd7 27 Qf2 Ned6 28 Rd1 Qe8 29 Bb1 Nf7 30 Re1 Qd7 31 Ba2 Ng7 32 Qe2 Re8 33 Bc4 Qc8 34 g4 Nd8 35 h5 gxh5 36 gxh5 Nf5 37 Qe5 Qd7 38 Qxf5 Rf8

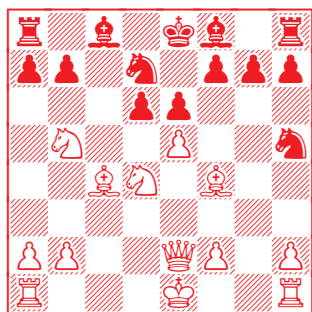


#11 - White to Play (win big material or mate)

This game has a striking finish that I overlooked during the heat of battle, although I did eventually win the game by more prosaic means. Can you find the pretty shot that I missed?

**RUSTY POTTER - R HAAS
1967 CAROLINAS OPEN
SICILIAN**

1 e4 c5 2 Nf3 d6 3 d4 cxd4 4 c3 dxc3 5 Nxc3 Nd7 6 Bc4 e6 7 Bf4 Qc7 8 Qe2 Ngf6 9 e5 Nh5 10 Nb5 Qc6 11 Nfd4 Qxg2



**#12 - White to Play
(win big material or mate)**

You have an advantage here if you've read some state and regional magazines, since this game has been published several times. My opponent is attacking my rook and my bishop; what's a poor guy to do? I decided to be generous in the extreme...

Chess Clubs

Please send additions / corrections to the Editor

♖♗ Alexandria: Fairfax County Chess Club, Lee District Park, Thursdays 6:30-9:30pm in the Snack Bar, info Walter Scott, WScott123@aol.com ♗ Arlington: Arlington Chess Club, Central United Methodist Church, 4201 N Fairfax Dr (across street from Ballston metro), Fridays 7pm. Registration for rated Ladder and Action events ends 8pm. Blitz/Quick tourney first Friday of each month. Info www.wizard.net~matkins or John Campbell (703) 534-6232 ♗ Arlington Seniors Chess Club, Madison Community Center, 3829 N Stafford St, info (703) 228-5285 ♗ Blacksburg: Chess Club of Virginia Tech, GB Johnson Student Center, Rm 102, Virginia Tech, Wednesdays 7-9pm ♗ Charlottesville: Charlottesville Chess Club, St Mark Lutheran Church, Rt 250 & Alderman Rd, Monday evenings ♗ Chesapeake: Zero's Sub Shop, 3116 Western Branch Blvd (Rt 17), (Poplar Hill Plaza near Taylor Rd intersection), Mondays 6pm to closing ♗ Great Bridge United Methodist Church, corner of Battlefiled Blvd & Stadium Dr, Tuesdays, 6:30-10pm, info 686-0822 ♗ Culpeper: Culpeper Chess Club, Culpeper County Public Library, Rt 29 Business (near Safeway). 1st, 2nd & 3rd Thursday of month, 6-9pm, info Vince LoTempio (540) 672-0189 or www.geocities.com/TimesSquare/Galaxy/9780/ ♗ Fort Eustis: contact Sorel Utsey 878-4448 ♗ Fredericksburg: Spotsylvania Chess, Lutheran Church Rte West 4.7 miles from Exit 130 on I-95. Every Tuesday 6-9pm, info Mike Cornell 785-8614 ♗ Glenss: Rappahannock Community College - Glenss Campus Chess Club, Glenss Campus Library, Tuesdays 8-10pm in the student lounge, info Zack Loesch 758-5324(x208) ♗ Hampton: Peninsula Chess Club, Thursdays 7pm, Thomas Nelson Community College, info Tim Schmal, 757-851-3317 (h) or 757-764-2316(w) or tcschmal@aol.com ♗ Harrisonburg: Shenandoah Valley Chess Club, Trinity Presbyterian Church, corner of S High (rt 42) & Maryland Ave (Port Republic Rd), Fridays 7:30pm, <http://cep.jmu.edu/huffmacj/svcc/svccchome.html> ♗ Mechanicsville: Stonewall Library, Stonewall Pkwy, Mondays 6:30-9pm 730-8944 ♗ Norfolk: Larchmont Public Library, 6525 Hampton Blvd, Wednesday 6-9pm ♗ ODU Chess Club, Webb Univ Ctr, Old Dominion University, info www.odu.edu/~chess ♗ Purcellville: Blue Ridge Cafe, Thursdays 5-7pm and Saturdays 1-4pm (& bi-wkly 4-7pm), info Douglas A Gripp, 540-668-7160 ♗ Richmond: The Kaissa Chess Club, Virginia Museum of Fine Arts, 2800 Grove Avenue. Thursdays 5:30-9pm. info Alfredo Franco 367-1154 ♗ Knights at Noon, 12noon at Dumbarton Library, 6800 Staples Mill Rd. Peter Hopkins 262-4167 ♗ The Side Pocket, Cross Roads Shopping Center, Staples Mill Rd. A billiards parlor with chess tables set up any hour, every day ♗ Huguenot Chess Knights, Bon Air Library Community Room, 1st & 3rd Friday of each month, 7-11pm, info Walter Chester 276-5662 ♗ Jewish Ctr CC, 5403 Monument Ave. 4-6pm every other Sunday beginning 1/8/95. (804) 288-0045 ♗ Roanoke: Roanoke Valley Chess Club, Grandin Ct Rec Ctr, Corner of Lofton & Barham Rd SW, Fridays 7:30-11:00pm, Info Brian Roark (540) 772-1435 ♗ Virginia Beach: Tidewater Community College CC, Princess Anne Rd, Bldg D Kempsvill Cafeteria, Mondays & Wednesdays 7-10pm, <http://users.exis.net/~rybarcz/> ♗ Williamsburg: Williamsburg Chess Club, Williamsburg Landing - Main Building, 2nd floor lounge, 5700 Williamsburg Landing Dr, Mondays 7-10pm, info Don Woolfolk (757) 229-8774 ♗ Winchester: Winchester Chess Club, Westminster-Canterbury Home for the Elderly, Tuesdays 7pm ♗ Woodrbridge: Prince William Chess Club, Wednesdays 7-9pm either in the Community Room, Potomac Library, 2201 Opitz Road or C D Hylton High School, 14051 Spriggs Rd. Contact Dick Stableford, 703-670-5887 or o6usmc@erols.com



Readers' Games & Analysis



BOB BRAGDON - YAD FANTU
ARLINGTON SENIOR'S CHESS CLUB
STONEWALL ATTACK

Notes by Ralph Belter

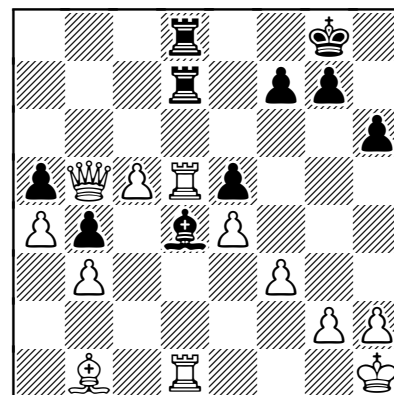
(Over the past year Yad Fantu may well be the most improved player at the Arlington Seniors Chess Club. He finished 3rd in both the speed tourney and the recent gambit tournament. Yad was always an excellent attacking player, if somewhat inconsistent. Playing weekly, he has managed to add consistency while maintaining his aggressive style.) **1 d4 Nf6 2 e3 c5 3 f4** (In general, I believe the Stonewall is only good after Black plays d5. Then e5 can be controlled by White. Here though Black can play d6 keeping control.) **3...Nc6 4 Nf3 d6 5 c3 cxd4 6 exd4 Bg4 7 Bd3 e5 8 0-0 Be7 9 dxe5 dxe5 10 Qe2** (This looks to be the culprit. White seems fine after 10 fxe5 Nxe5 11 Bb5 though he still must be careful because of his lack of development and exposed king.) **10...exf4 11 Bxf4 0-0 12 Kh1** (A waste of time. 12 Rd1 threatening Bxh7 seems better.) **12...Re8 13 Qc2 Rc8 14 Ne5 Nb4 15 Bxh7+** (With simple moves, Fantu has a winning game. However, this looks like panic. 15 cxb4 Rxc2 16 Bxc2 at least gives White some hope to hold on.) **15...Nxb7 16 Qa4 b5** (a nice deflection sac winning more material) **17 Qxb5 Nc2 18 Nxb7 Nxa1 19 Qf5 Nf6 20 Nxf6+ Bxf6 21 Nd2 Qb6 22 Ne4** (White doesn't like 22 Rxa1 Qxb2 but he misses Fantu's clever 24th move.) **22...Nc2 23 Nxf6+ Qxf6 24 Qxc2 Qxf4** (The queen is immune due to mate on the back rank. Well done indeed!) **25 Kg1 Qe3+ 26 Kh1 Rcd8 27 Qf5 f6 28 h3 Re5 29 Qg4 Rg5 30 Qc4+ Rdd5 31 Rd1 Qe6 32 Rxd5 Rxd5 33 Qf4 Rd1+ 34 Kh2 0-1** (White gave up without waiting on 34...Qd6 exchanging queens.)



W E WEBBERT - JOHN CAMPBELL
ARLINGTON SENIORS CHESS CLUB 2001
SCANDINAVIAN

Notes by Ralph Belter [B] & John Campbell [C]
(Well played games are often so close that it's hard to tell who stands better at any given time. This game caused a lively discussion in the post mortem, with the players still debating the positions that arose. Join in as we put the game under the microscope and try to determine who was winning and who was losing. [B]) **1 e4 d5 2 exd5 Nf6 3 Bb5+ Bd7 4 Bc4 b5 5 Bb3 Bg4** (5...a5 [C]) **6 f3 Bc8 7 a4 b4 8 c4** (Believe it or not, this is all a book line to here. 8 Ne2 is normal. [B]) **8...c6 9 dxc6 Nxc6 10 Ne2 e5 11 0-0 Bc5+ 12 Kh1 0-0 13 d3 Re8** (It is time to take stock. White has an extra pawn but his light square bishop is blocked by his own pawns. Black certainly has compensation for the pawn. [B] 13...h6!? [C]) **14 Bg5** (I do not think White should trade off his good bishop for a knight. [B]) **h6 15 Bxf6 Qxf6 16 Nd2 Bf5** (Here I would not allow a bishop to be exchanged. [B]) **17 Ne4 Bxe4** (17...Qe7 [C]) **18 dxe4** (Another debate centers on which to recapture with. It isn't clear but I agree with White. [B]) **Red8 19 Qc2 a5** (19...Rd7 [C]) **20 Rad1 Nd4 21 Nxd4 Bxd4 22 Ba2 Rab8 23 b3 Rb6** (23...Rd7) **24 Qe2 Rbd6 25 Bb1 Bc3?** (A serious mistake. The game looks drawish if Black just sits on the position. If he wants to play for more he should try 25...Qh4 with a kingside attack. [B]) **26 Rd5 Qg6 27 c5 R6d7 28 Rfd1 Bd4 29 Qb5 Qe6**

(diagram)





30 Rxd7? (White has outplayed Black for the last few moves and now 30 c6 would win, eg, 30...Rxd5 31 exd5 Qxd5 (31...Rxd5 32 Qb8+) 32 c7 The text throws away most of the advantage. [B]) **30...Rxd7 31 Rd3** (This is another serious mistake. 31 Bc2 is better and 31 c6 is still strong too. [B]; The key move c6! was pointed out by Black shortly after the game ended. [C]) **31...Rc7** (Now Black is winning. [B]) **32 Qxa5 Rxc5 33 Qd8+ Kh7 34 Rd1 Qxb3 35 Re1 Qe3!** (If 36 Rxe3 Rc1 mates. A nice finish. [B]; Now White's resource 36 Qh4 still fails to 36...Rc1 pinning the rook and winning. [C]) **0-1**

ROANOKE VALLEY CC CHAMPIONSHIP

by Bill Rulison

The Roanoke Valley Chess Club Championship, held June 30-July 1, drew 19 participants to the Salem Senior Citizen Center. The field was fairly well distributed, to wit: 1 expert, 1 class B player, 5 class C, 5 class D, 3 class E, 3 class F, and 1 unrated.

Judah Brownstein captured 1st place with a perfect 5-0 score. Brian Solomon took 2nd with 4-1. Third-ranked Ed Boyers and fifth-rated Tom Raney tied for 3rd, Boyers winning the tiebreak but Raney claiming the top Junior trophy. Ryan Fitzgerald and Malcolm Scott shared the under 1300 prize, Scott ahead on tiebreak.

DAKE MEMORIAL

by Bill Rulison

On Saturday, April 27, the Roanoke Valley Chess Club held a 4-round swiss tourney in Salem. Top rated Ted Watkins and 5th rated Sam Kennedy tied for 1st after drawing their last round game. There was a 5-way tie for 3rd place.

The Editor apologizes to Bill Rulison and the Roanoke Valley Chess Club for mislaying this little piece and thus failing to include it in our previous issue.

2001 STAR CITY CHESS TOURNAMENT

*Sponsored by the
Roanoke Valley Chess Club*

August 25, 2001

Raleigh Court Presbyterian Church, Rm 206
1837 Grandin Rd, Roanoke VA

4-SS, rds 1 & 2 game/45, rds 3 & 4 game/60. \$\$ 24% or gross receipts to 1st place, 16% to 2nd, 12% to 3rd, 10% to top under 1300, 8% to top Jr. EF \$9 advance (by 8/17), \$11 at site, \$1 discount to RVCC members. Reg 9:00-9:45am, rds 10-12:30-2-4. Enter: Paul Yearling, 1123 Locust Bottom Rd, Eagle Rock VA 24085. Entries also accepted at RVCC meetings through 8/17. For more info contact Bill Rulison, 540-343-0740; or Ed Andrews, 540-561-3629 [w], 540-774-6706 [h], or email cgg6g@allstate.com





POTTER COMBINATION QUIZ SOLUTIONS *(from pages 11-14)*

1. Gorostiaga-Potter: 28...Qxh3+! 29 Kxh3 Rh5# 0-1
2. Potter - Margrave: 24 f8=Q+ Qxf8 25 Ng6+! hgx6 26 Qh3+ Bh4 27 Qxh4# 1-0
3. Potter - Creasy: 45 Qe5+ Kd7 46 Bf5+ Kd8 47 Qd6+ Ke8 48 Bg6# 1-0
4. Wright - Potter: 21...Qc5+ 22 Kg3 (if 22 Kf1 Nh3! 23 gxh3 Bxh3#) 22...Nh5+ 23 Kh4 Qf2+! 24 Kxh5 g6+ 25 Kxh6 Qh4# 0-1
5. Fasano - Potter: 32...Re2+ 33 Kb3 Qxb2+ 34 Ka4 Qxa3+ 35 Kxa3 Rf3+ 36 Qd3 Rxd3+ 37 Ka4 Ra2# 0-1
6. Potter - Imbraguglio: 25 Rxd8+! Kxd8 (25...Qxd8 26 Qe6+ Qe7 27 Qxe7#) 26 Qd5+ Kc8 27 Qe6+ Kb8 28 Qd6+ Qc7 29 Qxf8+ 1-0
7. Vickers - Potter: 24...h5! 25 Qh4 (25 Qg3 Ne2+ 26 Kg2 Nxc3 wins) 25...Qe1+ 26 Rf1 Qxh4 0-1
8. Newman - Potter: 39...Rc4+ 40 Ka5 (40 Kb3 Rf4+ 41 Kc3 Rxf5) 40...Kb7 0-1
9. Potter - Fore: 24 f4 Bb2 25 Rd6+ Kf5 26 Bd3+ Kg4 27 Kg2! g5 28 h3+ Kh5 29 Rh6# 1-0
10. Ripley - Potter: 35...Re2+! 36 Kxe2 (36 Qxe2 Qg3#) 36...Qd2+ 37 Kf3 Qxc2 38 Ke3 (38 fxc6 Rf5+ 39 Ke3 Qd2+ 40 Ke4 Re5+ 41 Kf3 Qe3#) 38...Qd2+ 39 Ke4 gxf5+ 40 Rxf5 Qc2+ 41 Ke3 Rxf5 0-1
11. Potter - Vickers: 39 Rxe6!! Rxf5 (39...Qd1+ 40 Re1+ Kg7 41 h6+ Kh8 42 Qxf8#; 39...Nxe6 40 Bxe6+ Qxe6 41 Qxe6+ +-; 39...Qg7 40 Re8+ Nf7 41 Be5 Qxe5 42 Qxf7+ Kh8 43 Rxf8#) 40 Re8+ Kg7 41 Rg8# 1-0
12. Potter - Haas: 12 Qxh5 Qxh1+ 13 Kd2 Qxa1 14 Nc7+ Kd8 15 Ndx6+ fxe6 16 Nxe6+ Ke7 17 exd6+ Kf6 18 Qg5+ Kf7 19 Nc7# 1-0



The **Virginia Chess Federation** (VCF) is a non-profit organization for the use of its members. Dues for regular adult membership are \$10/yr. Junior memberships are \$5/yr. **President:** Mark Johnson, PO Box 241, Barboursville VA 22923, rmj142@yahoo.com **Vice President:** Mike Atkins, PO Box 6139, Alexandria VA 22306, matkins@wizard.net **Treasurer:** F Woodrow Harris, 1105 West End Dr, Emporia VA 23847, fwh@3rddoor.com **Secretary:** Helen Hinshaw, 3430 Musket Dr, Midlothian VA 23113, ahinshaw@erols.com **Scholastics Chairman:** Mike Cornell, 12010 Grantwood Drive, Fredericksburg VA 22407, kencorn@erols.com **Internet Coordinator:** Roger Mahach, 7901 Ludlow Ln, Dunn Loring VA 22027, rmahach@vachess.org **VCF Inc. Directors:** Helen Hinshaw (Chairman); Roger Mahach; Mark Johnson; Mike Atkins; Mickey Owens.



In This Issue:

| | | |
|---|----------------|---|
| Tournaments | | |
| Charlottesville Open | 1 | ♠ |
| George Washington Open | 1 | ♠ |
| Roanoke Valley CC Championship | 16 | ♠ |
| Dake Memorial | 16 | ♠ |
| Features | | |
| Fischer-Mathews 1964 | 5 | ♠ |
| The Four Chessmen | 8 | ♠ |
| Book Review (<i>Chess on the Net</i>) | 9 | ♠ |
| The Gray Knight | 10 | ♠ |
| Rusty Potter Combination Quiz | 11 | ♠ |
| Readers' Games & Analysis | 15 | ♠ |
| Odds & Ends | | |
| State Championship Announcement | 3 | ♠ |
| Upcoming Events | 3, 5, 7, 9, 16 | |
| Chess Club Directory | 14 | |
| Potter Quiz Solutions | 17 | |
| VCF Info | 17 | |

Virginia Chess
7901 Ludlow Ln
Dunn Loring VA 22027

Nonprofit Organ.
US Postage
PAID
Permit No. 97
Orange, VA
22960

VIRGINIA CHESS

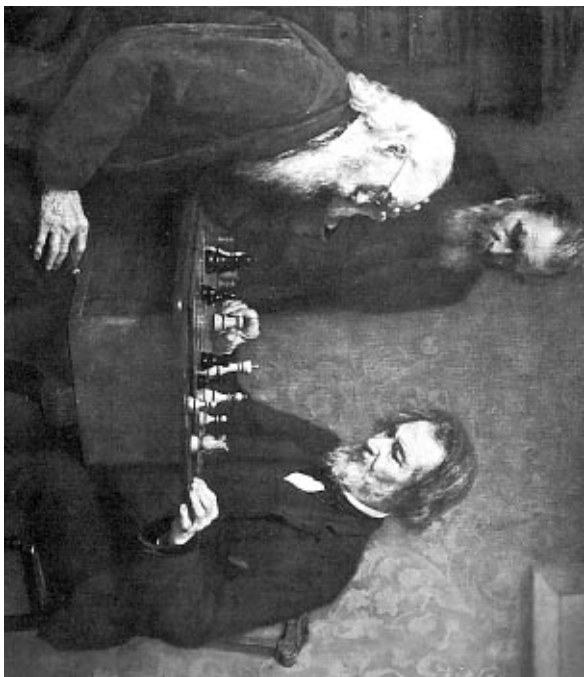
Newsletter

The bimonthly publication of the
Virginia Chess Federation

2001 - #4

Inside...

Rare Fischer Simul Game ♠ Rusty Potter Combination Quiz
♠ Preview of Mark Bland's new novel, *The Four Chessmen*



Make Your Reservations Now for Labor Day Weekend
in Charlottesville for the State Championship!