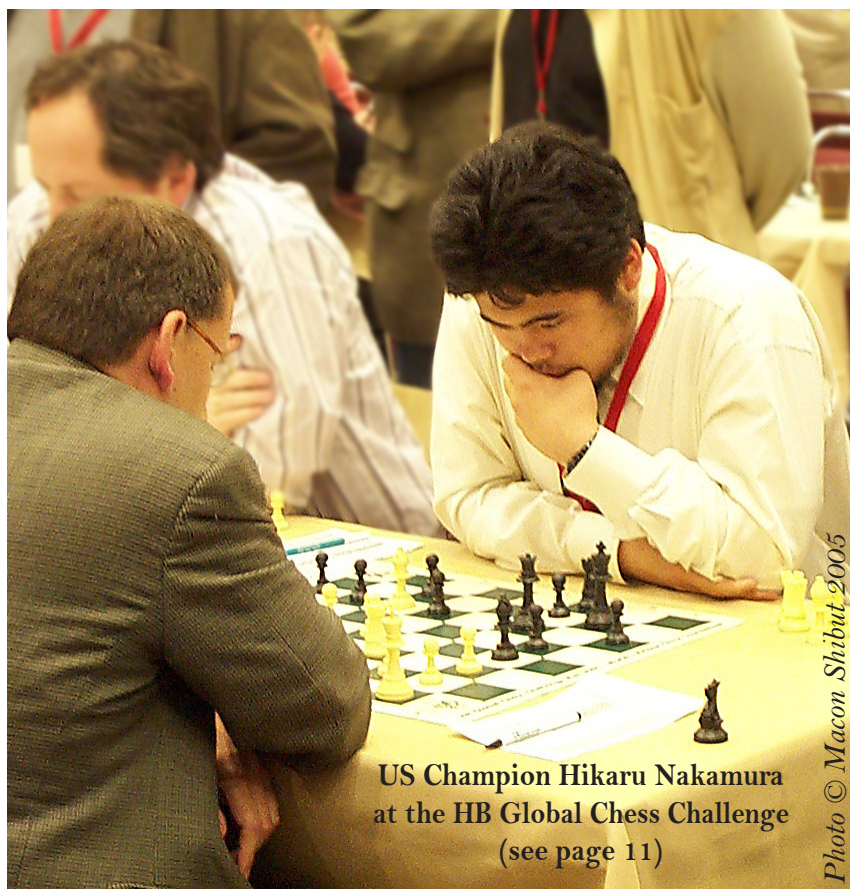


# VIRGINIA CHESS

Newsletter

The bimonthly publication of the  
Virginia Chess Federation

2005 - #3



US Champion Hikaru Nakamura  
at the HB Global Chess Challenge  
(see page 11)

Photo © Macon Shibut 2005

# VIRGINIA CHESS

## Newsletter

**2005 - Issue #3**

Editor:

Macon Shibut  
8234 Citadel Place  
Vienna VA 22180  
[vcfeditor@cox.net](mailto:vcfeditor@cox.net)

Circulation:

Ernie Schlich  
1370 South Braden Crescent  
Norfolk VA 23502  
[ESchlich@aol.com](mailto:ESchlich@aol.com)



*Virginia Chess* is published six times per year by the Virginia Chess Federation. Membership dues (\$10/yr adult; \$5/yr junior under 18) include a subscription to *Virginia Chess*.

Send material for publication to the editor. Send dues, address changes, etc to Circulation.

The **Virginia Chess Federation (VCF)** is a non-profit organization for the use of its members.



Dues for regular adult membership are \$10/yr. Junior memberships are \$5/yr.

President: Mike Atkins, PO Box 6139,  
Alexandria VA 22306, [matkins2@cox.net](mailto:matkins2@cox.net)

Treasurer: Ernie Schlich, 1370 South Braden Crescent, Norfolk VA 23502, [eschlich@aol.com](mailto:eschlich@aol.com) Secretary: Helen Hinshaw, 3430 Musket Dr, Midlothian VA 23113, [jallenhinshaw@comcast.net](mailto:jallenhinshaw@comcast.net) Scholastics Chairman: Mike Cornell, 12010 Grantwood Drive, Fredericksburg VA 22407, [kencorn@erols.com](mailto:kencorn@erols.com) VCF Inc. Directors: Helen Hinshaw (Chairman), Marshall Denny, Mike Atkins, Ernie Schlich.





# GMU Spring Open

*by Mike Atkins*

**J**OSEPH FEYGELSON last made an impact on Virginia chess by sweeping the 1994 Virginia Closed State Championship 6-0 with a performance rating of 2556. Aside from blitz at the 2004 Millennium Chess Festival, he hadn't played organized chess for ten years. So how did his return to competition go? He continue right where he left off, scoring 4-0 at the George Mason University Spring Open.

Sixty-six players showed up for this old fashioned, single-day 4-SS, game/60 tornado. That has half again more than the anticipated turnout, so it seemed only fair that we distributed 150% of the published prizes!

Round one began with an upset. Peruvian FM Marco Pacheco (2515) arrived a little late, spent about 20 minutes on a move in the middle game and eventually lost on time (in a clearly winning position) to former VCF officer Ted Covey — almost a 1000 point upset!

The tournament came down to the last round, board one matchup between Feygelson and senior master Dov Gorman. Feygelson pulled out the win in a wild and crazy game that got down to a classic blitz finish. (Joseph kindly attempted to annotate the game for this article, but was unable to reconstruct the moves of the decisive phase.) Meanwhile on board 2 Alex Barnett defeated Ray Kaufman, who had been 3-0 to that point. Thus Feygelson finished alone at the top. A four-player tie with 3½ included Barnett, Vladimir Pascalutsa, Jason McKinney & Tyler Cook and together they split the 2nd, 3rd, under-2200 and under-1900 money. Culver Fortna took clear U1600. Under 1300 and U1000 was split 4-ways among Arman Khojandi, Jerry Wu, Ashley Xue & Jeff Brown.

The Fairfax campus of George Mason University had hosted many chess tournaments in the past, including the 1976 US Open(!), but this was the

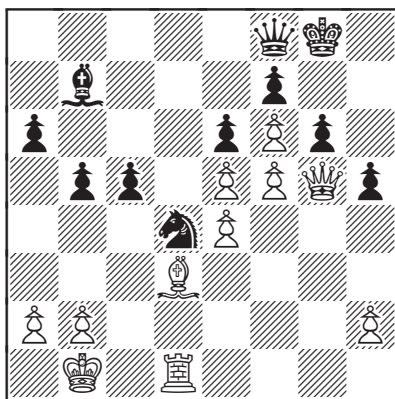


first event there in many years at. After many events at the Arlington campus, I was afraid of getting phone calls from people who went to the wrong site by force of habit. Fortunately that didn't happen. many thanks to GMU Chess Club President Jeff Brown and all the GMU students who provided a great venue and got to experience their first rated event. Hopefully there will be more in the near future!

### DOV GORMAN - KEBADU BELACHEW

#### SEMI SLAV

1 c4 c6 2 Nf3 d5 3 e3 Nf6 4 Nc3 Nbd7 5 d4 e6 6 Qc2 Bd6 7 g4 0-0 8 g5 Nh5 9 Bd3 g6 10 Bd2 dxc4 11 Bxc4 a6 12 0-0-0 b5 13 Be2 Bb7 14 Ne4 Be7 15 Kb1 Qb6 16 Ne5 Nxe5 17 dxe5 Ng7 18 Nf6+ Bxf6 19 gxf6 Nf5 20 Bb4 Rfd8 21 Bc5 Qc7 22 f4 Rxd1+ 23 Rxd1 Rd8 24 Bd3 Qd7 25 Bb6 Qe8 26 e4 Nd4 27 Qf2 c5 28 Bxd8 Qxd8 29 Qh4 h5 30 Qg5 Qf8 31 f5



31...exf5 32 exf5 c4 33 fxg6 cxd3 34 Qxh5 fxg6 35 Qxg6+ Kh8 36 Qh5+ 1-0

### RAYMOND KAUFMAN - ALEX HERRERA

#### SLAV

1 d4 Nf6 2 Nf3 d5 3 c4 c6 4 Nc3 Bf5 5 cxd5 cxd5 6 Qb3 e6 7 Qxb7 Nbd7 8 Bf4 Rc8 9 e3 Nh5 10 Ba6 Nxf4 11 Qxc8 Nd3+ 12 Ke2 Qxc8 13 Bxc8 Nxb2 14 Bxd7+ Kxd7 15 Ne5+ Ke8 16 g4 Bb4 17 Rhc1 Bg6 18 Nxc6 hxc6 19 Rab1 Ba3 20 Nb5 Nc4 21 Nxa3 1-0



## RICHARD DELAUNE MEMORIAL

**June 17-19, 2005**

Holiday Inn Express

6401 Brandon Ave, Springfield, VA 22150

*Conveniently located at the junction of I-95, I-495 and I-395*  
5-SS, rd1 G/2, rds 2-5 30/90 SD/1. \$\$\$3300 (top 4 Open G,  
rest b/120). *Open:* \$600-400-200-100, U2300 \$175. U2200:  
\$400-200, top Class A, B each \$150, unrated \$125. U1600:  
\$325-175, D, U1000 each \$150. *All:* Top 3 in each section  
receive beautiful etched crystal trophies. Reg Friday 6/17  
5-7:30pm, rds 8, 10-4:30, 10-3:30. Opening ceremony Friday  
7:45PM, Memorial Reception in Board Room Saturday 6/18  
3:45pm. EF \$50 if rec'd by 6/10, \$60 afterwards and at  
site. NS, NC, W, FIDE. Hotel: 703-644-5555) ask for "Sales  
Department" and request special chess rate of \$85 Reserve  
before June 1! Hotel website- <http://www.ichotelsgroup.com/h/d/hi/1/en/hd/wassf?irs=null> Special announcement: Richard's  
friends, 2 time US Champ GM Joel Benjamin and GM John  
Fedorowicz will be playing! *Enter:* Make checks payable to  
"Virginia Chess" and mail to Michael Atkins, PO Box 6139,  
Alexandria VA 22306. Info <http://vachess.org/rkdmemorial.htm>,  
[matkins2@cox.net](mailto:matkins2@cox.net), [dmehler@chessctr.org](mailto:dmehler@chessctr.org) no phone or internet  
entries, just inquiries.



20 Grand Prix points







## Kingstowne Quad #19/Cash Quad #5

*by Don Millican*

A total of eleven players turned out for the nineteenth installment of the Kingstowne Quads, while a quartet competed in the fifth version of the Cash Quads, on April 2 in Alexandria. The turnout was lower than at past events, no doubt due to an unintended conflict with the Maryland Open; under the circumstances, more players showed up than might even have been expected.

In the Cash Quad, Steven Rollins, Quentin Moore & James Robert Guill all scored 2-1 to tie for 1st-3rd, splitting the \$150 combined 1<sup>st</sup> and 2<sup>nd</sup> place prizes evenly. The top medal Quad had Michael C Callinan and William H Wilson Jr tie with 2, with Wilson taking the silver and Callinan the bronze on tiebreak. For the want of another player, the bottom "quad" was in fact a field of seven playing a Swiss. Ryan Blackman scored a perfect 3-0 for 1<sup>st</sup> place gold. Three players were in contention for the remaining two medals: Ted B Compher, Gavin Moore (brother of Cash Quad co-winner Quentin Moore), and Kingstowne Chess Club president Rob McKinney, all with 2-1. Tiebreaks gave Compher the silver and Moore the bronze.

With three Quads in the books for 2005, the standings for Top 2005 Player 1600 & Above are: Quentin Moore with a total of 7½ from participation in all three Quads this year; Michael C Callinan has 4½ from two Quads; Andrew Samuelson has 4, also from two Quads; Timothy Rogalski has 3½ from two Quads; and rounding out the top six are Marco Pacheco and Patrick Ray with 2½ from a single Quad.

Rob McKinney leads the field for Top 2005 Player Under 1600 with 7 points from three Quads. Ted B Compher has 5 points also from three Quads. Scott A Lacy participated in two Quads and has 4 points. Byron O'Neal and W E Webbert round out the top five with 3½ from three and two Quads respectively.



Kingstowne will have a triple event on May 7: the usual medal and cash quads, and a 5-round action-plus (G/45 vice G/30) Swiss with a prize fund of \$250 (\$100 to first) based on twenty players. See the March or April issues of *Chess Life* for further details.

*Addendum to last issue's report on Kingstowne Chess Festival III:* Joseph Hawkins Jr & Steven Kousen won Top Unrated in the Novice section with 3½ points apiece.

## Kingstowne Quad #20/ Cash Quad #6/Action-Plus

by Don Millican

*"Data? I Don't Have the Data... You Were Supposed to Have the Data."*

The hours before a tournament are, at best, organized chaos for a director. This time the chaos was anything but organized. On the Friday night before the Kingstowne Quads reached #20 on May 7 in Alexandria, I carefully made sure I had everything packed up and ready to go: *Flyers for upcoming events?* Check. *Paper supply for the printer?* Check. *Score sheets for the players?* Check. *Medals for winners?* Check. *Extra cash for Cash Quad, in case of too many use checks for on-site entries?* Check. Looks like I had all my ducks in a row. Half an hour after arriving at the playing site, I realized to my horror that I had forgotten mama duck: the data of advance entries for the tournament. I had to rush home, retrieve the files. I owe special thanks to Rob McKinney, John Mirone and Mike Callinan for holding down the fort while I made the 45-minute round trip.

There was a silver lining in this dark cloud of a snafu. While retrieving the data, Hillary Liu, an advance entrant for the Action-Plus, and her mother knocked on my door. They had misread the TLA and thought the address for advance entries was the playing site! If I'd had my act together they would have missed the tournament, or at least the first round. As it was, they simply followed my car back to the site!



Arriving back at the tournament, I found I was a victim of success: more than two dozen players were waiting to register. The next 40 minutes saw a mad dash to get everyone entered. To compensate for the players waiting almost an hour, I decided to make all on-site entry fees at the lower advance rate. John Mirone's help was crucial, looking up players' ratings while I entered their data into my laptop.

Finally it was time to play chess. To compensate for the delay I was forced to be creative and change a few things from the announced schedule and playing conditions. Mike Callinan, a fellow tournament director of long experience, helped to make sure I wasn't too creative.

Five players competed in the Cash Quad ('Quint?'). Ji Yunqi was the winner with 3 points and Tyler D Cook finished second with 2. There were a "lucky" thirteen players in the medal quads. The top medal quad saw Yang Dai and the ever-helpful Mike Callinan tie with 2½. The spoiler to Mike's interesting day was Dai taking the first place silver medal on tiebreak, leaving Callinan with the bronze. The middle quad was won by Kelly T Barr's return to tournament play after a two-year hiatus with a perfect 3 points and a gold medal. Harry S Godfrey continued his success from the Kingstowne ChessFest III by scoring 2 points and taking the second-place bronze medal. The bottom medal "Quad" of five players had Kingstowne Chess Club president Rob McKinney win the silver medal with 2½, with Steven B Kousen and Nick Kousen — father and son — tie with 2 points. Steve took the 2<sup>nd</sup> place bronze medal on tiebreak.

The Action-Plus was the success for the day. A total of eighteen players competed for a prize fund that ended up being 90% of the advertised amount. Andrew Samuelson was the clear winner with 4½ out of 5 points. Thomas Krause, Philip R Krause, and Benjamin W Krause — father, brother and son/nephew — along with Alex Herrera tied for 2<sup>nd</sup>-5<sup>th</sup> with 4 points. In addition, Philip and Benjamin tied for Under 1800. The combined second place and Under 1800 prizes were divided among all four. Raymond Wang took the Under 1400 prize with 2½.

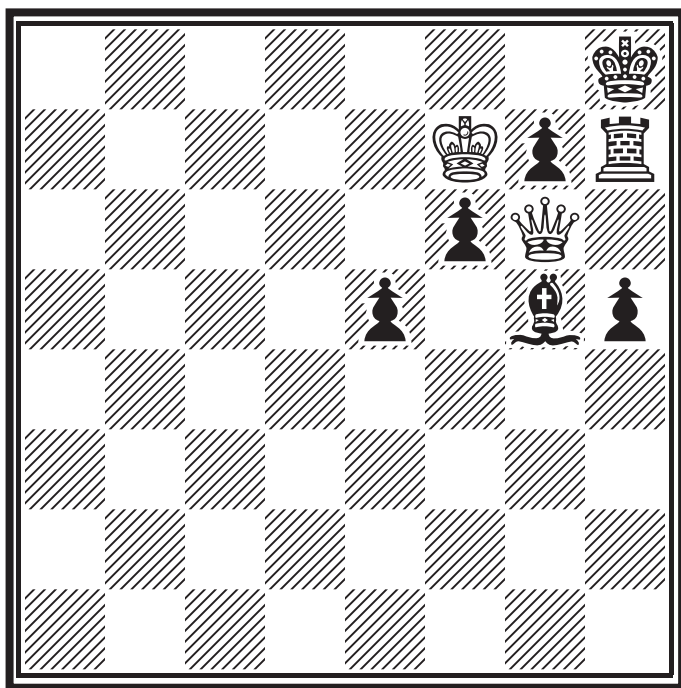
So the tournament finished successfully! Everyone who participated deserves my thanks for tolerating my initial mistake. The next Kingstowne Quad will be June 4.





# Yes, Virginia, Solving Problems Can Help Your Over-the-Board Game!

by James Rynd



*Mate in 5*

Ever had one of these ‘messes’ of a position in your games? I certainly have! Both sides appear — *ahem* — somewhat constipated in their position. But here White, though at a material disadvantage, can use the problem theme known as the *switchback* to give mate in five moves. A switchback is where a piece leaves its original square and then returns there without going to any other square. That’s all the hints you get!

(Solution on page 18)



# Readers' Games & Analysis

## Millennium Chess Festival

First off, following up on our tournament report from last issue, Justin Burgess submitted another game from the Millennium Festival, held in Virginia Beach this past February. (As a bonus, William Barrow sent a couple photos of his son Jack playing in the same event.)

**EUGENE CLOETE - JUSTIN BURGESS**

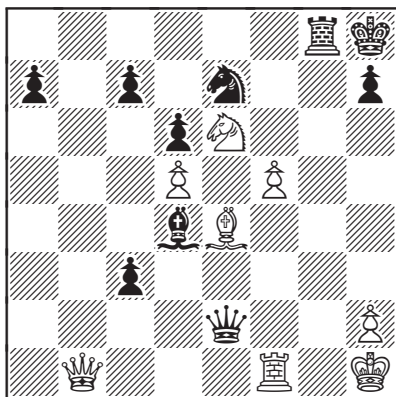
**MILLENNIUM CHESS FESTIVAL 2005**

**ENGLISH**

1 c4 e5 2 Nc3 Nc6 3 g3 g6 4 Bg2 Bg7 5 e3 Nge7 6 Nge2 0-0 7  
0-0 d6 8 d3 Be6 9 Nd5 Bxd5 10 cxd5 Nb8 11 Qb3 Qc8 12 e4  
Nd7 13 Bg5 f6 14 Be3 Kh8 15 f4 f5 16 Rac1 b6 17 Bh3 Nc5 18  
Qc2 Qa6 19 Bxc5 bxc5 20 fxe5 Bxe5 21 Nf4 Qxa2 22 Ne6 Rfb8  
23 Rb1 Rxb2 24 Rxb2 Bxb2 25  
d4 Qa3 26 Bg2 Qe3+ 27 Kh1  
Bxd4 28 Qb1 c4 29 Qb7 Rc8  
30 exf5 gxf5 31 g4 c3 32 Qb1  
Rg8 33 gxf5 Qe2 34 Be4

*(diagram)*

34...c2! 35 Qe1 c1Q! 36 Qxe2  
Rg1+! 0-1





*Jack Barrow versus IM Carlomag Oblitas from what appears to be the Blitz tourney at the 2005 Millennium Festival. [Photo by W A Barrow]*

## Scholastic Super Nationals

Next up we have an annotated game by Ruixin Yang, of Thomas Jefferson HS in Annandale, who was co-champion at the US Scholastic Super Nationals in April in Nashville, Tenn! Fellow Virginian Robert Brady finished 12<sup>th</sup> and the Jefferson team also took a high place.

**RORY WASIOLEK - RUIXIN YANG**

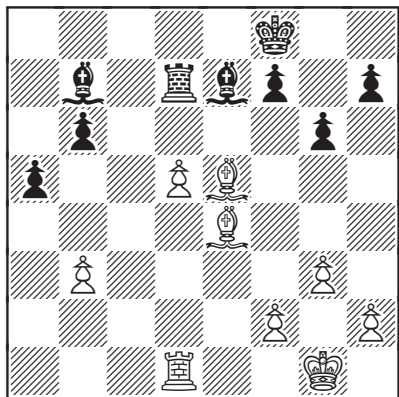
**NIMZOWITSCH/LARSEN**

*Notes by Ruixin Yang*

**1 b3** (Rory is known to play this as his pet opening.) **1...d5 2 Bb2 e6 3 e3 Nf6 4 Nf3 Be7 5 Be2 c5 6 0-0 Nc6 7 d4 0-0 8 c4 b6 9 Nc3 dxc4 10 bxc4 cxd4 11 Nxd4** (11 exd4 is probably better as White should maintain the pieces in an effort to utilize his pawn center. Then 11...Bb7 =) **11...Nxd4 12 exd4 Bb7 13 Qb3 Qd6!?** (I thought for a long time here and decided on this move, opening possibilities on both flanks. 13...Qxd4? would be bad, of course, because of 14 Nd5 Qc5 15 Nxe7+ Qxe7 16 Ba3±) **14 Rad1 Qb4** (I



thought about 14...Qf4 15 Bc1 Qh4 16 Qb5 Bd6 17 h3 h6 ∞ for a while but then decided against complications and offered the queen trade instead, where Black is slightly better.) **15 d5 exd5 16 Nxd5** (16 Bf3 Rfd8 17 Nxd5 Nxd5 18 cxd5 Qxb3 19 axb3 transposes) **16... Nxd5 17 cxd5 Qxb3 18 axb3 Rfd8 19 Bf3 Rd7 20 Rfe1 Bc5 21 Re4?** (White spent 16 minutes on this move but it turns out to be an error.) **21...Rad8?** (I rejected 21...Rxd5! 22 Rxd5 Bxd5 23 Rg4 because I missed that then Black can continue 23...Re8! 24 Rxg7+



Kf8 25 Kf1 Bxb3+) **22 Rg4 g6 23 Bf6 Re8 24 Re4 Rxe4 25 Bxe4 Kf8 26 g3 Be7 27 Be5 a5!**

(diagram)

This move sets up for the endgame should White decide to advance d6. From inspection that ending should be won for Black because a5 prevents White from eliminating his weakness by b3-b4, which would otherwise draw the game.

27...f5 looks like a normal move, but calculation shos it to be one tempo too slow and White can draw: 28 d6 Bxe4 (or 28...fxe4 29 dxe7+ Kxe7 30 Rxd7+ Kxd7 31 b4 a5 32 bxa5 bxa5 33 Kf1=) 29 dxe7+ Kxe7 30 Rxd7+ Kxd7 31 b4 a5 32 bxa5 bxa5 33 Kf1 Kc6 34 Ke2 Kd5 35 Bc3 a4 36 Kd2 Kc4 37 h4 a3 38 Be5 Kb3 39 Kc1 Ka2 40 Bd4 etc.

**28 d6?** (Determined to force the draw, but 28 f4 b5 29 Kf2 a4 30 bxa4 bxa4 31 Ke3 was better.) **28...Bxe4 29 dxe7+ Kxe7 30 Re1** (If 30 Rxd7+ Kxd7 31 Kf1 Kc6 32 b4 (or 32 Ke2 Kc5! (not 32...Kb5 33 Bd6) 33 Ke3 Bd5 34 Bd4+ Kb5 wins) 32...a4 33 Ke2 Kb5 34 Ke3 Bb1 35 Bc3 Kc4 Black would be winning.) **30...f5 31 f3 Bxf3 32 Bc7+ Be4 33 Bxb6 Rd2! 34 Bxa5 Rg2+ 35 Kf1 Rxh2 36 Bb6 h5 37 Bf2** (Black's rook is trapped but it doesn't matter here.) **37...Kf6 38 b4 Kg5 39 Rxe4?!** (Desperation, but pushing was not much better: 39 b5 Kg4! 40 b6 Bd3+ 41 Kg1 Kh3! 42 b7 Rg2+ 43 Kh1 Rxf2 44



b8Q Be4+ 45 Kg1 (45 Rxe4 Rf1 *mate*) 45...Rg2+ 46 Kf1 Bd3+ 47 Re2 Bxe2+ 48 Ke1 Bf3 49 Qf4 Rxg3 with a winning position.) **39...fxe4 40 Kg1 Rh3 41 b5 h4 42 b6 hxg3 43 Be3+ Kg4 44 b7 Rh8 45 Ba7 e3 -+ 46 Bxe3 Rb8 47 Kg2 Rxb7 48 Bd4 Rc7 49 Bg1 Rc2+ 50 Kh1 Kh3 51 Bf2 Rc1+ 52 Bg1 g2 *mate* 0-1**

## HB Global Chess Challenge

Next, a couple games from the world's biggest-ever open chess tournament! The HB Global Chess Challenge was staged May 18-22 in Minneapolis, Minnesota. (The HB Foundation is a nonprofit education organization that promotes the cognitive and academic benefits of chess.) Several Virginia players made the trek northwest for this historic event. My own little traveling party included fellow Arlington CC members David Long & Sanda Costescu, and we encountered other familiar faces (Tim Rogalski, Bobby Fischer, Bill Carroll, *et al*) on the plane or at the airport. I'd never visited Minneapolis before and I liked what I saw of it. In particular, it seemed impossible to get a bad meal there! We tried all sorts of different restaurants and all of them proved to be excellent. Minnesota, a hotbed of fine Mexican cuisine... who knew?

### MACON SHIBUT –MAGESH CHADRAN PANCHANATHAN HB GLOBAL CHESS CHALLENGE, MINNEAPOLIS 2005

RUY LOPEZ

*Notes by Macon Shibut*

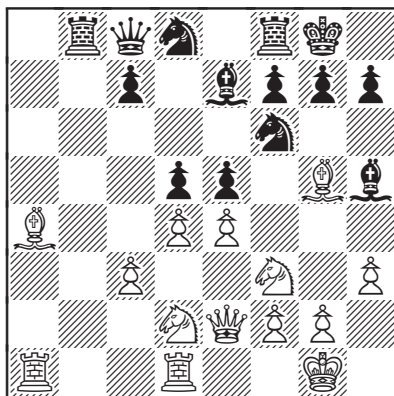
(I should first of all apologize if I've gotten my opponent's name wrong. I don't understand how Indian names work—what part is the given name, what is the surname—and I very well may have gotten the order of things messed up. The pairing sheet listed him as "Magesh Chadran" but I noticed that he filled in his own scoresheet as "Panchanathan Magesh". So I looked him up online afterwards and found him listed as... "Panchanathan, Magesh Chadran." In any case, he's an IM from India.) **1 e4 e5 2 Nf3 Nc6 3 Bb5 a6 4 Ba4 Nf6 5 Qe2 b5 6 Bb3 Be7 7 d4 d6 8 c3 0-0 9 0-0 Bg4 10 Rd1 Qc8 11**



**h3 Bh5 12 a4 Rb8 13 axb5 axb5**  
**14 Be3** (perhaps 14 Bg5 was better)  
**b4 15 Ba4 Nd8 16 Nbd2 bxc3 17**  
**bxc3 d5 18 Bg5**

(diagram)

**18...exd4?** (I expected only 18...  
 dxe4 19 Nxe4 Nxe4 20 Bxe7 Nxc3  
 21 Qxe5 with a chaotic position; at  
 the board I consumed a lot of time  
 and energy just trying to visualize  
 it! The surest evaluation I could



come up with was, “Well, I *don’t think* I’m losing a piece.”) **19 exd5**  
 (19 e5!? is more ambitious and may be better. However, I couldn’t  
 figure out what he was thinking with his last move and I fretted over  
 the possible piece sacrifice reply 19...dxc3. Meanwhile the text also  
 appeared to win material, relatively safely. I liked how the d5 pawn  
 restricted his knight at d8) **19...Bd6 20 Bxf6 gxf6 21 Ne4 Kg7 22**  
**Rxd4 Nb7 23 Qe3** ( $\Delta$  Nxf6!) **23...Bg6** (Now I used too much time

## Charlottesville Open

July 16-17, 2005

Best Western Cavalier Inn

105 N Emmett St

Charlottesville, VA 22905

5-SS, G/90. \$\$1525 (top 3 guaranteed, class prizes b/50): \$400-  
 250-150; X,A,B,C each \$125; D \$100; U1200 \$75; Unr \$50. Prizes  
 will be increased if more than 70 entries. EF \$45 if rcvd by 7/13,  
 thereafter \$55. Reg 11-11:45, rds 12-3:15-7, 9:45 - 1:30. Free coffee  
 and snacks provided. Hotel \$81 for 1-4 to 6/30, \$93 thereafter—  
 reserve early! Hotel phone (434) 296-8111. *Enter:* Make checks  
 payable to VCF and mail to Ernest Schlich 1370 S. Braden Cres.  
 Norfolk, VA 23502. Info—no phone entries—(757) 853-5296 or  
 email [ESchlich@aol.com](mailto:ESchlich@aol.com) or online [www.vachess.org](http://www.vachess.org)

15 Grand Prix points





trying to find a plan and wound up hashing things up a bit in the rush to the time control at move 30) **24 Nh4 Nc5 25 Nxd6 cxd6 26 f4 Ra8 27 Qc1 Be4 28 Bd1 f5 29 Rxa8 Qxa8 30 Bf3** (On this last move before time control I set little trap: the 'obvious' 30...Nb3 will be answered 31 Qd1 Nxd4 (31...Bxf3 32 Qxb3) 32 Qxd4+ f6 33 Bxe4 fxe4 34 Qxe4—slight material advantage, safer king, weak Black pawns. White would have all the ingredients victory. But my opponent resisted the bait despite his own slight time pressure.) **30...Kh8 31 Rd1 Qd8 32 Bxe4** (Committal, to be sure, but White needs to improve the knight's placement and not just leave it out there as a target after 32 g3) **32...fxe4 33 Nf5 Qf6 34 g4 Rg8 35 Ng3 Qh4** (In the famous book *The Art of Attack*, Vukovich observed



*H B Global Chess Challenge — chess players as far as the eye can see! [Photo by Macon Shibut]*

## Tidewater Chess Club

Beth Messiah Synagogue

7130 Granby St, Norfolk.

Tuesday evenings, 7-10 pm

USCF rated events almost every week. Visit <http://.home.earthlink.net/~eschlich> for directions and the schedule. Visitors and spectators of all ages welcome. Ernie Schlich (757) 853-5296, [ESchlich@aol.com](mailto:ESchlich@aol.com)



the underappreciated truism that a kingside attack is by definition a decentralizing operation. Black does not achieve what he wants in sending his queen off to the edge here, but the alternatives—eg 35...Nd3 36 Qe3—would also be fine with White.) **36 Kg2 Ra8** (The consistent move would be 36...h5, of course. What then? White could defend passively by 37 Rh1, or he could try to strike a counterblow by 37 g5 Δ 37...Nd3 38 Rxd3 exd3 39 Nf5 “winning the queen.” But in fact this would end disastrously for White: 39...Rxg5+ 40 fxg5 Qe4+ and Qxf5. The correct play is the Golden Mean, neither g5 nor Rh1 but 37 Qe3! and only after 37...hxg4 would 38 Rh1 follow, and White wins!) **37 Qb2 Qe7** (Bitter retreat, but if 37...Nd3 now 38 Rxd3 exd3 39 c4+ followed by Nf5 looks like the end for Black.) **38 c4+ f6 39 Ra1 Rf8 40 Nf5 Qc7 41 Kg3?** (Ah! I played the move I’d planned ahead (“*demonstrating Black’s helplessness*”) and overlooked simple immediate mate after 41 Qxf6+!) **41...Kg8 42 Rb1 Nd3 43 Qb7 Qxb7 44 Rxb7 Rd8 45 Nh6+ Kf8 46 Rf7+ Ke8 47 Rxh7 e3 48 Nf5 1-0** The reigning world junior champion, Pentala Harikrishna, participated our brief post mortem.

MACON SHIBUT –ROB ROWLEY

HB GLOBAL CHESS CHALLENGE, MINNEAPOLIS 2005

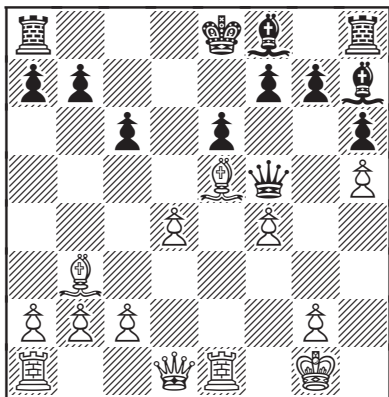
RUY LOPEZ

*Notes by Macon Shibut*

**1 e4 c6 2 d4 d5 3 Nc3 dxe4 4 Nxe4 Bf5 5 Ng3 Bg6 6 N1e2 Nf6 7 h4 h6 8 Nf4 Bh7 9 Bc4 Nbd7** (with 9...e6 we would inch closer to Tal-Botvinnik Apocalypse. Of course 10 0-0 Bd6 11 Nxe6!? fxe6 12 Bxe6 would be the 9th game of the 1960 world championship match—a game Rusty Potter called “the most famous classical Caro Kann ever played” and, offhand, I won’t disagree. Rusty offered his opinion after I repeated Tal’s sacrifice in our game at the 2003 Virginia Open. Play continued 12...Nbd7 13 Re1 Qc7 14 Bg8+ Kf8 15 Bxh7 Rxh7 16 Nf5 g6 17 Bxh6+ Kg8 18 Nxd6 Rxh6 [finally departing from Tal-Botvinnik, where 18...Qxd6 was played, although we remain in the realm of published analysis for a while longer] 19 Re6 Rxh4 20 g3 N! [not 20 Qd3? Nf8! 21 Rxf6 Qh7; Tal recommended 20 Qf3 but then



20...Rxd4 and what?] 20...Rg4 [20...Rh6] 21 Qd3 [21 Kg2!?] 21...Rd8 [21...Rf8] 22 Rae1 Nf8? [22...c5; 22...Qb6] 23 Rxf6 Rxd6 24 Rxf8+ Kxf8 25 Qf3+ Kg7 26 Qxg4 Qd7 27 Qg5 Rf6 28 Qe5 Kf7 29 Re4 1-0 The game ended in time for a short post mortem before heading outside to watch a total lunar eclipse!) **10 0-0 Nb6 11 Bb3 Nbd5 12 Re1** (12 c4 Nxf4 13 Bxf4 would be good too, and if then 13...e6 14 d5! Bd6 15 Bxd6 Qxd6 16 c5! Qxc5 17 dxe6) **12...Nxf4 13 Bxf4 e6 14 Nh5 Bg6 15 Nxf6+ Qxf6 16 h5 Bh7** (16...Bf5) **17 Be5 Qf5?** (17...Qg5 was necessary) **18 f4!**



*The threat g4! is remarkably hard to meet!*

**18...Bg8** (forced!) **19 g4 Qh7 20 d5!** (White must strike fast since 10 f4 was essentially a piece

*69th Annual*

## VIRGINIA CLOSED STATE CHAMPIONSHIP

Sept 3-5, 2005

Holiday Inn Express

6401 Brandon Ave

Springfield, VA 22150

*Conveniently located at the junction  
of I-95, I-495 & I-395*

Open to Virginia residents,  
military stationed in Virginia &  
students at Virginia colleges and  
universities with valid student  
ID for Fall 2005 semester

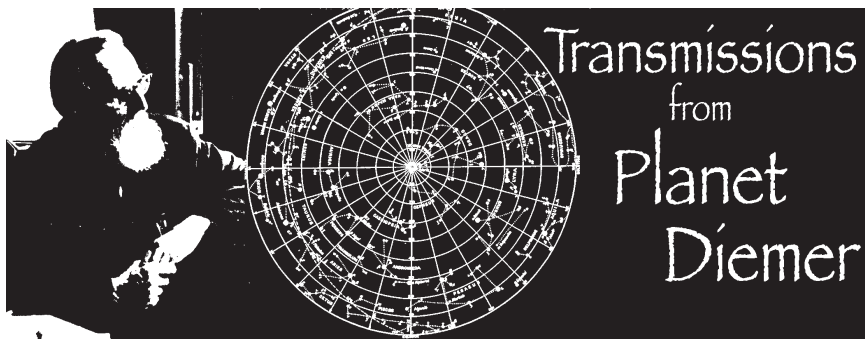
6-SS, 30/90, SD/1. \$\$2,700 b/100 (reentries count 50%). *Open:* \$600-300-200-150, X, A each \$100; trophies to 1st, top X & A. *Amateur (U1800):* \$425-225-150, C, D, U1200 & Unr each \$100, top Upset \$50; trophies to 1st, top C, D & U1200. *Both:* Reg 9am-12:30pm Saturday June 4, rds 1-7, 11-5, 10-3:30. Two ½pt byes allowed, must be declared before the start of rd 2. EF \$50 if rec'd by August 27, \$55 at site, VCF Membership req'd (\$10-\$5) Reentry allowed after rd 1 only, with ½pt bye for \$30. Trophy & state title to top scorer each section (tiebreaks: Cumulative, MM, S), trophies to top Senior (60+), Junior (U18) and Woman — all 1 pt added to Open section scores. W, NS, FIDE. Hotel \$75, reserve before 8/14, 877-800-6696 (local 703-644-5555) and ask for chess tournament rate. Plenty of nearby eateries and places to visit. *Enter:* Michael Atkins, PO Box 6139, Alexandria VA 22306, make checks to "Virginia Chess". For info email [matkins2@cox.net](mailto:matkins2@cox.net) or browse [www.vachess.org/2005closed.htm](http://www.vachess.org/2005closed.htm)

Annual VCF Business Meeting  
Saturday, Sept 3, 10am-Noon



sacrifice, there being no convenient way back for the bishop.) **20...0-0-0 21 Qd4 f6 22 Qxa7 fxe5 23 dxc6 bxc6 24 Bc4** (24 Rad1!? might have been very good too. After the text I had the sense that I ought to be winning but I also understood from past experience (some of it quite bitter) that the opponent's king can be quite slippery in such positions. It's hard to prove analytically whether Rowley could have defended better than he did in what follows. His moves were reasonable, at least, but in the end I got him.) **Rd4 25 Ba6+ Kd8 26 Rxe5 Rd7 27 Qb8+ Ke7 28 f5 Bf7 29 Rae1 Kf6 30 Qb3 exf5 31 Qc3 Kg5 32 Qe3+ Kh4** (32...Kf6 33 g5+! hxg5 34 Re6+ Bxe6 35 Qxe6mate) **33 Kf2 f4 34 Rh1+ Kxg4 35 Qf3mate 1-0**

Finally, Readers' Games & Analysis brings you one more from a faraway place...

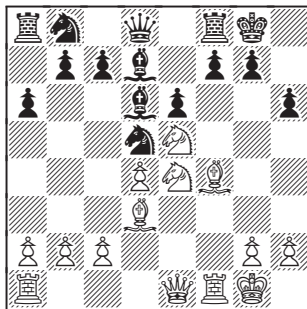


TIM HAMILTON - SHINSAKU UESUGI

2005 MARYLAND OPEN

BLACKMAR DIEMER

**1 Nc3 Nf6 2 d4 d5 3 e4 dxe4 4 f3 exf3** (Even a SuperGrandmaster went astray recently trying to sidestep BDG complications against a lower-rated opponent: 4...e3 not a bad move, but no panacea either **5 Bd3 g6 6 Bxe3 Bg7 7 Qd2 c6 8 Nge2 0-0 9 0-0-0 b5 10 Bh6 b4 11 Ne4 a5 12 h4 Nbd7 13 h5 Ba6 14 hxg6 fxg6 15 Bxg7 Kxg7 16 Qh6+ Kf7 17 Ng5+ Ke8 18 Ne6 Qb6 19 Bxa6 Rxa6 20 Nxf8 Nxf8 21 Nf4 a4 22 Rhe1 Qc7 23 Qxf8+ 1-0 Gramlich-Movsesian, 2005) **5 Nxf3 e6 6 Bg5 Be7 7 Bd3 0-0 8 0-0 h6 9 Bf4 a6 10 Qe1 Bd6 11 Ne5 Bd7 12 Ne4 Nd5?** (carelessly removing the principal defender from the kingside) (diagram) **13 Bxh6! Bxe5** (13...gxh6 loses, eg **14 Qg3+ Kh8 15 Rxf7 Rg8 16 Rh7+ Kxh7 17 Nf6+ Kh8 18 Nf7mate**) **14 dxe5 f5** (14...gxh6 is still no good, eg **15 Qg3+ Kh8 16 Qh3 Kg7 17 Qg4+ Kh8 18 Qh5 Kg7 19 Rf6!**) **15 exf6 Nxf6 16 Bxg7!** (insistent) **Kxg7 17 Qg3+ Kf7 18 Rxf6+ Qxf6 19 Nxf6 Kxf6 20 Rf1+ Ke7 21 Qg7+ 1-0****





# Theater of the Absurd

by Richard Runke

**T**HE YOUNG CHESS PLAYER learns many little maxims such as “*Do not bring out your Queen early in the game because she will soon be driven pillar to post by pieces of lesser value, losing many valuable tempi in the process.*” Then the instructor runs off a move sequence like 1 e4 e5 2 Qh5 as an example of premature deployment of the Queen. Surely such a weak move sows the seeds of defeat for White.

Here’s a game between a chess patzer and a tennis patzer: Boris Becker - Garry Kasparov, CNN Exhibition 2000: 1 e4 e5 2 Qh5 Nc6 3 Qf3 Nd4 4 Qc3 Nf6 5 f3 g6 6 Ne2 c5 7 Nxd4 cxd4 8 Qb3 Bg7 9 Bc4 0-0 10 c3 d5 11 Be2 d3 12 Bxd3 dxe4 13 Bxe4 Nxe4 14 fxe4 Qh4+ 15 Kd1 Qxe4 16 Re1 Bg4+ 17 Re2 Qxe2+ 18 Kc2 0-1 Another game, this time between an amateur chess player an amateur actor: Woody Harrelson - Garry Kasparov, Prague 1999: 1 e4 e5 2 Qh5 Nc6 3 Bc4 Qe7 4 Nf3 Nf6 5 Qh4 d6 6 d3 h6 7 h3 Be6 8 Nc3 Bxc4 9 dxc4 Nd4 10 Nxd4 exd4 11 Ne2 c5 12 f3 d5 13 cxd5 Nxd5 14 Qxe7+ Nxe7 15 Bd2 0-0-0 16 0-0-0 g6 17 Nf4 Bg7 18 c4 dxc3 19 Bxc3 Bxc3 20 bxc3 b6 21 c4 Nc6 22 Kb2 Rhe8 23 Rxd8+ Rxd8 24 Nd5 h5 25 a4 Kd7 26 Kc3 Ke6 27 f4 Nd4 28 Rd1 Ne2+ 29 Kc2 Nd4+ 30 Kc3 Ne2+ ½-½ Theater depends upon the viewer’s suspension of disbelief; this is sometimes difficult.

But sometimes the Absurd can be deliberately employed to yank Black out of his “book.” John Rouleau - Peter Minear, Philadelphia 2003: 1 e4 e5 2 Qh5 Nc6 3 Bc4 g6 4 Qf3 Nf6 5 Ne2 d6 6 h3 Be6 7 d3 Bg7 8 Nbc3 Nd4 9 Nxd4 exd4 10 Bxe6 fxe6 11 Ne2 Nd7 12 0-0 Qe7 13 Qg3 0-0 14 Bg5 Bf6 15 Bxf6 Qxf6 16 f4 Rae8 17 Rf3 c5 18 Raf1 Qg7 19 Qf2 Rf6 20 g4 h6 21 Ng3 Rff8 22 Qd2 b6 23 R3f2 Kh7 24 h4 Qf7 25 g5 hxg5 26 hxg5 1-0

Then you try the same line more than once! John Rouleau - Tim Rogalski: Eastern Open Washington USA (3), 27 12 2003 1 e4 e5 2 Qh5 Nc6 3 Bc4 g6 4 Qf3 Nf6 5 Ne2 Bg7 6 d3 Na5 7 Nbc3 Nxc4 8 dxc4 d6 9 h3 Be6 10 b3 Nd7 11 Be3 0-0 12 g4 f5 13 gxf5 gxf5 14 exf5 Bxf5 15 Qxb7 Bxc2 16 Rg1 Kh8 17 Bg5 Qe8 18 Qxc7 Rf7 19 Qxd6 e4 20 Qd2 Bd3 21 0-0-0 Qf8 22 Nf4 Qa3+ 23 Qb2 Qxb2+ 24 Kxb2 h6 25 Ng6+ Kh7 26 Be3 Re8 27 Rg2 a5 28 Nf4 Ne5 29 Kc1 Nf3 30 Ncd5 a4 31 Nxd3 axb3 32 N3b4 bxa2 33 Nxa2 Ra8 34 Ndb4 1-0





But it gets serious when this is tried at the grandmaster level.

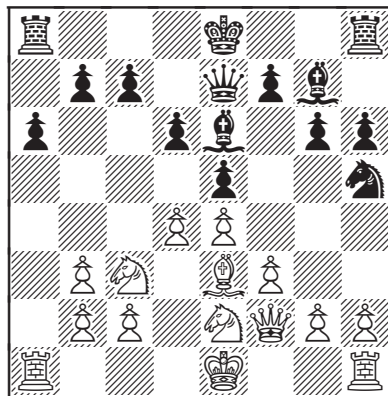
HIKARI NAKAMURA - KRISHNAN SASIKIRAN

SIGEMAN & Co (MALMØ/HØJE TAASTRUP 2005)

1 e4 e5 2 Qh5 Nc6 3 Bc4 g6 4 Qf3 Nf6 5 Ne2 Bg7 6 Nbc3 d6 7 d3 Bg4 8 Qg3 Qd7 9 f3 Be6 10 Bg5 Nh5 11 Qh4 h6 12 Be3 Na5 13 Bb3 Nxb3 14 axb3 a6 15 d4 Qe7 16 Qf2

(diagram)

16...exd4 17 Bxd4 Nf6 18 0-0-0 0-0-0  
19 Nf4 Rhg8 20 Rhe1 Kb8 21 Kb1 g5  
22 Nfe2 Rge8 23 g4 Qf8 24 Ng3 Nd7  
25 Be3 Qh8 26 Nge2 Be5 27 h4 Qg7  
28 Rh1 Nf6 29 Bd4 Nd7 30 Qe3 Qf6 31  
hgx5 hgx5 32 Bxe5 Qxe5 33 Rh5 Rg8  
34 Nd5 Rde8 35 Qc1 Qg7 36 Ne3 Nf6  
37 Rh2 Rh8 38 Rg2 Nd7 39 Nd4 Rh3  
40 c4 Qf6 41 Rf2 Reh8 42 b4 Qe5 43 c5  
dxc5 44 bxc5 Nxc5 45 Qc3 f6 46 Rc2  
Na4 47 Qb4 Bd7 48 Nb3 Rh1 49 Rxh1



Rxh1+ 50 Ka2 Nb6 51 Qf8+ Qe8 52 Qxe8+ Bxe8 53 Nc5 Nd7 54 Nxd7+ Bxd7 55 Kb3 Re1 56 Rc3 Be6+ 57 Kc2 Re2+ 58 Kc1 a5 59 Nc2 Rf2 60 Nd4 Bd7 61 Rc5 b6 62 Rd5 Kc8 63 e5 fxe5 64 Rxe5 c5 65 Nb3 Rf1+ 66 Kd2 a4 67 Nxc5 bxc5 68 Rxc5+ Kb7 69 Rxg5 Rxf3 70 Rd5 Be6 71 Rd3 Rf1 72 Rg3 Rf2+ 73 Kc3 Kb6 74 Kb4 Rf4+ 75 Ka3 Kb5 76 Re3 Bd5 77 Rd3 Bc4 78 Re3 Rd4 79 g5 Rd1 80 b3 axb3 81 Re8 Ra1+ 82 Kb2 Ra2+ 83 Kc3 Rc2+ 84 Kd4 b2 85 Rb8+ Ka4 86 g6 Bb5 87 g7 b1Q 0-1 It can be argued that White stood the better coming out of the opening.

What is the moral in this little story? Chess is a game; have fun, play with it!!



*Solution to Rynd mate in 5 from p 7:*

1 Ke6! (making way for the queen - threat: Qe8#) 1...Rh6 2 Qe8+ Kh7 3 Kf7! (the switchback; White's pieces now occupy their optimum squares) Rg6 4 Qg8+ Kh6 5 Qh8#





# Steve Graziano

As reported in the previous issue, long-time VCF member Steve Graziano, of Charlottesville, died in March. His friend and teacher Rusty Potter sent us a selection of Steve's games.

HOFF - GRAZIANO

2ND SUNDAY SWISS, ROANOKE 1991

GIUOCO PIANO

1 e4 e5 2 Nf3 Nc6 3 Nc3 Bc5 4 Bc4 (4 Nxe5 Nxe5 5 d4 Bd6 6 dxe5 Bxe5 7 f4) 4...Nf6 5 O-O d6 6 Re1 Bg4 7 Na4 Bxf3 (7...Nd4 8 Nxc5 dxc5) 8 Qxf3 Nd4 9 Qd1 Ne6 10 Bxe6 fxe6 11 Nxc5 dxc5 12 d3 Qd6 13 c3 O-O-O 14 Bg5 h6 (14... Qxd3) 15 Bxf6 gxf6 16 Re3 c4 17 Qa4 (17 Qf3) 17...cxd3 18 Qxa7 d2 19 Rd1 c6 20 Qa8+ Kc7 21 Qa5+ Kb8 22 Qa4 Rd7 23 Qc2 Rhd8 24 Re2 Qd3 25 Qxd3 Rxd3 26 f3 c5 27 Kf2 c4 28 h4 b5 29 a3 Kb7 30 h5 Kb6 31 g4 Ka5 32 Re3 R3d7! (32...Ka4?! 33 Rxd3 Rxd3 34 Ke2 Kb3 35 Rxd2 Rxd2+ 36 Kxd2 Kxb2 37 f4 exf4 38 e5 fxe5 39 g5 Kxa3 (39...hxc5 40 h6 Kxa3 41 h7 b4 42 h8Q) 40 gxh6 Kb2 41 h7 b4 42 h8Q bxc3+ 43 Ke2 c2) 33 Kg3 Ka4 34 f4 Kb3 35 Rf3 Rd3 36 Rxd3 Rxd3+ 37 Kf2 exf4 38 Ke2 Kc2 39 e5 Re3+ 40 Kf2 Rxe5 0-1

ANNE MARIE ALLEN - STEPHEN GRAZIANO

1994 VIRGINIA CLOSED

QUEEN'S GAMBIT DECLINED

1 d4 d5 2 c4 e6 3 Nc3 Nf6 4 Bg5 Nbd7 5 e3 c6 6 Bd3 Qa5 7 Bxf6 Nxf6 8 Ne2 Bb4 9 O-O dxc4 10 Bxc4 O-O 11 a3 Bd6 12 Qc2 Qh5 13 Ng3 Bxg3 14 fxg3 Ng4 15 Rfe1 Qxh2+ 0-1

ANNE MARIE ALLEN - STEPHEN GRAZIANO

1995 VIRGINIA CLOSED

BENKO GAMBIT

1 d4 Nf6 2 c4 c5 3 d5 b5 4 cxb5 a6 5 bxa6 Bxa6 6 g3 g6 7 Bg2 d6 8 b3 Bg7 9 Bb2 O-O 10 Nh3 Nbd7 11 O-O Qb6 12 Qd2 Rfb8 13 Bc3 Qb5 14 Re1 Nb6 15 Nf4 c4 16 Na3 Qd7 17 bxc4 Nxc4 18 Nxc4 Bxc4 19 e4 Ra3 20 Bb4 Rxa2 21 Rxa2 Bxa2 22 Bxd6 Qxd6 23 Qxa2 Qb4 24 Qe2 Nd7 25 Rc1 Ne5 26 Bh3 Qa3 27 Rc2 Nf3+ 28 Kg2 Nd4 29 Ra2 Qb3 30 Qd2 Qf3+ 31 Kg1 Rb1+ 32 Bf1 Rxf1+ 33 Kxf1 Qh1# 0-1

STEPHEN GRAZIANO - JUDAH BROWNSTEIN

1998 JEFFERSON OPEN

SICILIAN

1 e4 c5 2 Nc3 Nc6 3 f4 e6 4 Nf3 d5 5 Bb5 a6 6 Bxc6+ bxc6 7 d3 Be7 8 O-O Nh6 9 f5 dxe4 10 Bxh6 exf3 11 Qxf3 gxh6 12 fxe6 Bxe6 13 Qxc6+ Kf8 14 Qxe6 Qd4+ 15 Kh1 Qg7 16 Rae1 Re8 17 Nd5 Qg6 18 Qd7 Qd6 19 Rxe7 Qxd7 20 Rxd7 (20 Rxf7+ Kg8 21 Nf6#) 20... Re2 21 Rxf7+ Kg8 22 Rg7+ Kf8 23 Rgf7+ Kg8 24 Nf6# 1-0

STEPHEN GRAZIANO - PRESTON HIPPEARD

1998 JEFFERSON OPEN

SICILIAN

1 e4 c5 2 f4 Nc6 3 Nf3 a6 4 Nc3 d6 5 a4 g6 6 Bc4 e6 7 O-O Bg7 8 f5 Nge7 9 fxe6 Bxe6 10 Bxe6 fxe6 11 Ng5 Qd7 12



d3 Ne5 13 a5 h6 14 Na4 hxg5 15 Nb6  
Qd8 16 Nxa8 Qxa8 17 Bxg5 Kd7 18 c3  
Rh5 19 Bxe7 Kxe7 20 d4 cxd4 21 cxd4  
Nc4 22 Rc1 Ne3 23 Rc7+ Ke8 24 Qa4+  
Rb5 25 Rxg7 Qa7 26 Rff7 e5 27 Rxb7  
Qxd4 28 Rg8 *mate* 1-0

STEPHEN GRAZIANO - COLVIN WATSON  
RICHMOND VIII 1999

FOUR KNIGHTS

1 e4 e5 2 Nf3 Nc6 3 Nc3 Nf6 4 Bb5 d6  
5 d4 a6 6 Bxc6+ bxc6 7 dxe5 dxe5 8  
Qxd8+ Kxd8 9 Nxe5 Be6 10 Nxc6+  
Kd7 11 Ne5+ Kc8 12 O-O Bd6 13 Nd3  
Bc4 14 b3 Bxd3 15 cxd3 Be5 16 Bb2  
Rd8 17 Na4 Bxb2 18 Nxb2 Ng4 19  
Rfd1 Rd4 20 Rac1 Kb7 21 Rc4 Rd7 22  
Na4 Rd6 23 Rdc1 c6 24 Nc5+ Kb6 25  
Rb4+ Kc7 26 Rb7+ Kc8 27 Rxf7 Ne5  
28 Rf8+ Rd8 29 Rxd8+ Kxd8 30 d4  
Nd7 31 Ne6+ Ke7 1-0

THOMAS HOFFMAN - STEPHEN GRAZIANO  
1999 VIRGINIA CLOSED

TWO KNIGHTS

1 e4 e5 2 Nf3 Nc6 3 Bc4 Nf6 4 Nc3  
Nxe4 5 Nxe4 d5 6 Bxd5 Qxd5 7 Nc3  
Qd8 8 h3 Be7 9 d3 Be6 10 Be3 O-O  
11 Qd2 f5 12 Bg5 e4 13 Bxe7 Qxe7 14  
dxe4 Rad8 15 Qe2 Qb4 16 Qb5 fxe4  
17 Nd2 e3 18 fxe3 Qh4+ 19 Kd1 Rf2  
20 Ne2 Bc4 21 Qxb7 Rxe2 22 Qxc6  
Rdxd2+ 23 Kc1 Rxc2+ 24 Kb1 Rxb2+  
25 Kc1 Rec2+ 0-1

STEPHEN GRAZIANO - PATRICK MCCARTNEY  
2001 JEFFERSON OPEN

FRENCH

1 e4 e6 2 d4 d5 3 Nc3 Bb4 4 e5 Ne7 5  
a3 Bxc3+ 6 bxc3 c5 7 Qg4 O-O 8 Bd3  
Nbc6 9 Nf3 c4 10 Bh6? Ng6 11 Bxg6  
fxg6 12 Bd2 Bd7 13 h4 Qe7 14 h5 Be8

15 h6 Rf5 16 Ke2 Qf7 17 hxg7 Kxg7 18  
Rh6 Kf8 19 Rah1 Rh5 20 Ng5 Rxh6 21  
Rxh6 Qe7 22 Nxh7+ Kg7 23 Nf6 1-0

SANDA COSTESCU - STEPHEN GRAZIANO  
2002 VIRGINIA CLOSED  
DUTCH

1 Nf3 f5 2 g3 Nf6 3 Bg2 g6 4 d3 Bg7 5  
O-O O-O 6 c3 d6 7 Bg5 h6 8 Bd2 c6 9  
Qc1 Kh7 10 c4 e5 11 Nc3 a5 12 a4 Na6  
13 Rb1 Nc5 14 Be3 e4 15 Ne1 Re8 16  
Bxc5 dxc5 17 dxe4 fxe4 18 Qc2 Bf5 19  
e3 Qd7 20 Rd1 Qe6 21 Ne2 g5 22 Kh1  
h5 23 h4 gxh4 24 Nf4 Qc8 25 gxh4 Bh6  
26 Qe2 Bxf4 27 exf4 Bg4 28 f3 exf3 29  
Qd3+ Bf5 30 Qxf3 Be4 31 Qc3 Rg8  
32 Bxe4+ Nxe4 33 Qd3 Kh6 34 Rf3  
Qg4 35 Qe3 Qxh4+ 36 Rh3 Nf2+ 37  
Kh2 Ng4+ 38 Kh1 Nxe3 39 Rd6+ Rg6  
40 Rxg6+ Kxg6 41 Rxh4 Rd8 42 Rh2  
Rd1 43 Re2 Nxc4 44 Kg2 Rd2 45 Rxd2  
Nxd2 46 Kg3 c4 47 Nc2 Ne4+ 48 Kf3  
Nc5 49 Ne3 b5 50 axb5 cxb5 51 Ke2 h4  
52 Kf3 Nd3 53 Nd1 h3 54 Kg3 Kf5 55  
Ne3+ Ke4 56 f5 Kxe3 0-1

KEVIN DISTON - STEPHEN GRAZIANO  
2004 WORLD OPEN  
DUTCH

1 d4 f5 2 Nf3 Nf6 3 c4 g6 4 Nc3 Bg7 5  
e3 d6 6 Be2 O-O 7 O-O Bd7 8 Qb3 Qc8  
9 Bd2 Nc6 10 a3 Kh8 11 Rab1 e5 12 c5  
dxc5 13 dxe5 Ng4 14 h3 Be6 15 Qb5  
Ngxe5 16 Nxe5 Nxe5 17 Qxc5 b6 18  
Qb5 Rd8 19 Rfd1 a6 20 Qa4 b5 21 Qc2  
c5 22 b4 c4 23 a4 Qb8 24 Ra1 f4 25 exf4  
Bf5 26 Qc1 Nd3 27 Bxd3 Rxd3 28 axb5  
axb5 29 Rxas Qxas 30 Nxb5 Bxh3 31  
gxh3 Rxh3 32 Kf1 Qf3 0-1



*Incomparable Chess Sets From*  
**THE HOUSE OF STAUNTON**



*Chess Sets - Chess Boards - Antique Sets - Chess Clocks*



EMAIL: [sales@houseofstaunton.com](mailto:sales@houseofstaunton.com) ~ PH: (256) 858-8070  
Visit us on the Internet at [www.houseofstaunton.com](http://www.houseofstaunton.com)

**Virginia Chess**  
 1370 South Braden Crescent  
 Norfolk, VA 23502



Nonprofit Organ.  
 US Postage  
 PAID  
 Permit No. 97  
 Orange, VA  
 22960

## In This Issue:


### Tournaments

GMU Spring Open.....	1	
Kingstowne Events .....	4	

### Features

Mate in 5 (Rynd) .....	7	
Readers' Games & Analysis.....	8	
Theater of the Absurd (Runke).....	17	
Steve Graziano .....	19	

### Odds & Ends

Upcoming Events .....	3, 12, 15	
VCF Info .....	<i>inside front cover</i>	