

VIRGINIA CHESS

Newsletter

The bimonthly publication of the
Virginia Chess Federation

2006 - #1

LARRY BAUFMAN



**WINS ARLINGTON CC CHAMPIONSHIP
AND 2006 VIRGINIA OPEN!**

VIRGINIA CHESS

Newsletter

2006 - Issue #1

Editor:

Macon Shibut
8234 Citadel Place
Vienna VA 22180
vcfeditor@cox.net

Circulation:

Ernie Schlich
1370 South Braden Crescent
Norfolk VA 23502
ESchlich@verizon.net



Virginia Chess is published six times per year by the Virginia Chess Federation. Membership dues (\$10/yr adult; \$5/yr junior under 18) include a subscription to *Virginia Chess*.

Send material for publication to the editor. Send dues, address changes, etc to Circulation.

The **Virginia Chess Federation (VCF)** is a non-profit organization for the use of its members.



Dues for regular adult membership are \$10/yr. Junior memberships are \$5/yr. President: Marshall Denny, 4488

Indian River Rd, Virginia Beach VA

23456, marshalldenny@gmail.com Treasurer: Ernie Schlich, 1370

South Braden Crescent, Norfolk VA 23502, ESchlich@verizon.net

Secretary: Helen Hinshaw, 3430 Musket Dr, Midlothian VA 23113,

jallenhinshaw@comcast.net Scholastics Coordinator: Mike Hoffpauir,

405 Hounds Chase, Yorktown VA 23693, mhoffpauir@aol.com VCF

Inc. Directors: Helen Hinshaw (Chairman), Marshall Denny, Mike

Atkins, Mike Hoffpauir, Ernie Schlich.





2006 Virginia Open

LARRY KAUFMAN captured clear 1st place at the 2005 Virginia Open, Jan 27-29 in Springfield. He did it what might be called the classical way, defeating his first four opponents and then clinching the title with a final round draw versus his closet pursuer. This marks the fourth time that the Maryland IM has finished atop VCF's largest annual event. Indeed, he first won it way back in 1969 in what was just the second running of the tournament [*and, I believe, the first time it was actually called "Virginia Open" -ed*]. Larry's other Virginia Open triumphs came in 1998 (=1st, tied with Emory Tate) and 2000.

Four players tied for second: reigning state champion Danny Miller, Bryan Smith (the tournament's top-rated entry), Dov Gorman & Ray Kaufman. Daniel Clancy & Zachary Perry each scored 3½-1½ to win the Expert prize.

The following game was played on board one in the decisive final round. Going in, Kaufman stood alone at 4-0 while Gorman was his closest pursuer with 3½.

LARRY KAUFMAN - DOV GORMAN

SICILIAN

Notes by Dov Gorman

(This game took place in the last round where Black had to win in order to finish first in the tournament. My objective was to play for imbalanced position.) **1 e4 c5 2 c3 d5 3 exd5 Qxd5 4 d4 g6 5 Na3 Bg7 6 Nb5 Na6 7 dxc5 Qxd1+ 8 Kxd1 Nf6 9 c6** (White does not need to do this; 9 Bc4 is playable. But the position is imbalanced and I liked Black's game.) **9...bxc6 10 Nd4 Bb7 11 Ngf3 0-0-0 12 Ke1 Nc7 13 Bc4 Nfd5 14 Ng5 c5** (The first critical position; after the game Larry condemned his 14th move, explaining that he feared here 14...Bxd4 15 cxd4 Nb4. True, after say 16 Ke2 Nc2 17 Rb1 Nxd4+ White's game would have been unpleasant. But the move I played seems good too.) **15 Nb3 Nb6?!** (The second critical position; in



the game I saw the continuation 15...Nxc3! 16 bxc3 Bxc3+ 17 Ke2 Bxa1 18 Nxa1 Bxg2 19 Rg1 Bd5, which is clearly better for Black. However, I estimated that the move played would be good as well.)

16 Bxf7 c4 17 Nc5 Bxg2 18 Rg1 Bd5 19 Be6+ Nxe6 20 Ngxe6

The third critical position, and unfortunately I did not rise to the occasion this time.

20...Rdg8

This routine move displaces my rook and surrenders any advantage. I overlooked the strong response 20...Nd7! If then 21 Nxd8 Nxc5 White will lose material as his knight is trapped; or 21 Nxd7 Bxe6 22 Nc5 Bf5 probably followed by ...Rd5, Black's pieces dominate and he maintains the bishop pair; or finally, 21 Nxg7 Nxc5 and again White's knight would be trapped.

After I played the text, I understood that my chances had evaporated. I felt my energy deserting me and so I offered a draw; after 21 Nxg7 Rxg7 22 Be3 the position would indeed be about equal.

1/2-1/2

*The last round: foreground Larry Kaufman (l) vs Dov Gorman;
on board two are Mark Smith (l) vs John Rouleau*



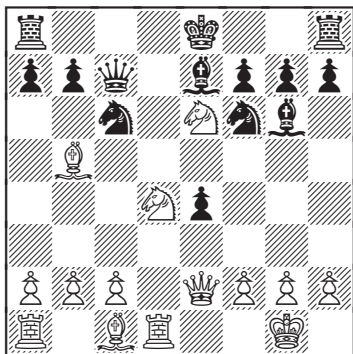


TED UDELSON staged a come from behind rally to win the Amateur section. Going into the last round, Patrick Ray was alone in 1st place with the only perfect 4-0 score. However, Udelson defeated him to take the top prize by half a point. Either Ramesh Balasubramanian or Elan Rodan could have equaled Udelson's final score by winning their board two pairing, but in fact they drew their game after a hard fight and so wound up tied with Ray for 2nd. Alan Salgado, Culver Fortna & Virgilio Rollamas all won their final games to also reach the 4-1 score group. In addition to tying for 2nd, Fortna was top class C. Nich Kousen won top class D. Philip Hood was top Under 1200 and Dequan Kong was top unrated.

DANIEL MILLER – RON HENRY

FRENCH

1 e4 e6 2 d4 d5 3 Nd2 Be7 4 Bd3 c5 5 dxc5 Nf6 6 exd5 Qxd5 7 Ngf3 Nc6 8 0-0 Bxc5 9 Nb3 Be7 10 Qe2 e5 11 Bc4 Qd6 12 Bb5 e4 13 Ng5 Bf5 14 Rd1 Qc7 15 Nd4 Bg6 16 Nge6

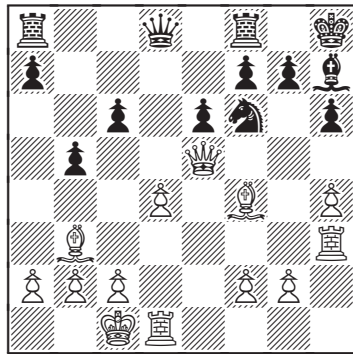


16...fxe6 17 Nxe6 Qc8 18 Nxc7+ Kf7 19 Ne6 Ne5 20 Ng5+ Kg7 21 Bf4 Qf5 22 Qe3 h6 23 Qc3 Nf3+ 24 Nxf3 exf3 25 Qc7 Qxb5 26 Qxe7+ Bf7 27 Be5 Qxe5 28 Qxe5 Rae8 29 Qc3 fxg2 30 Rd6 Re6 31 Rxe6 Bxe6 32 Re1 Rc8 33 Qg3+ Kf7 34 Rxe6 1-0

JOHN ROULEAU - ILYE FIGLER

CARO KANN

1 e4 c6 2 d4 d5 3 Nc3 dxe4 4 Nxe4 Bf5 5 Ng3 Bg6 6 N1e2 e6 7 h4 h6 8 Nf4 Bh7 9 Bc4 Bd6 10 Qe2 Bxf4 11 Bxf4 Nf6 12 0-0-0 Nbd7 13 Nh5 0-0 14 Rh3 Nxc5 15 Qxc5 Nf6 16 Qe5 b5 17 Bb3 Kh8



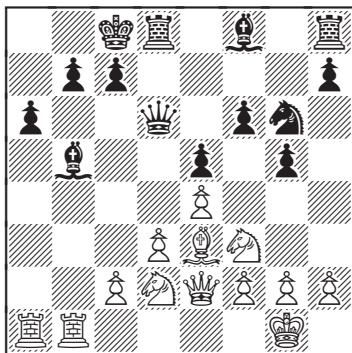
18 Bxh6 Ne8 19 h5 Qf6 20 Bg5 Qxe5 21 dxe5 f6 22 exf6 gxf6 23 Bh6 Rg8 24 Bxe6 Rxg2 25 Be3 Ng7 26 Bd7 Nf5 27 Bc5 Rg7 28 h6 Rg4 29 Be7 Nxe7 30 Bxg4 Nd5 31 Bf3 Nb4 32 Rh4 a5 33 a3 Nxc2 34 Be4 Na1 35 Bxh7 Kxh7 36 Rd7+ Kh8 37 Rg4 Nb3+ 38 Kc2 Nc5 39 Rc7 f5 40 Rg6 b4 41 Rgxc6 1-0



DANIEL MILLER - JASON BRAUN

RUY LOPEZ

1 e4 e5 2 Nf3 Nc6 3 Bb5 a6 4 Bxc6
dxc6 5 0-0 Qd6 6 d3 f6 7 Be3 Bg4?!
8 Nbd2 0-0-0 9 Qe2 Ne7 10 Rfb1 g5
11 b4 Ng6 12 a4 Bd7 13 b5 cxb5 14
axb5 Bxb5



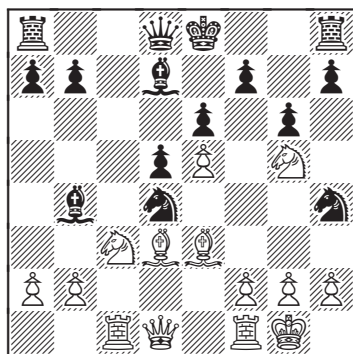
15 Rxb5! axb5 16 Nxg5! (Suddenly
introducing the threat Qg4+ when
Black would either have to plug his own
air hole, eg Qd7 allowing Ra8#, or with
...Kb8 walk into Ba7+ and Bc5! mating
or winning the queen.) 16...b6 17 Nf7
Qd7 18 Ra8+ Kb7 19 Rxd8 Qxf7 20
Qg4 Ne7 21 Qd7 Bg7 22 Rxh8 Bxh8
23 Qxb5 Qe6 24 Nc4 Bg7 25 Na5+
Ka7 26 Qa4 1-0

LARRY KAUFMAN - CHRIS SEVILLA
SICILIAN

1 e4 c5 2 c3 e6 3 Nf3 Nc6 4 d4 cxd4 5
cxd4 Bb4+ 6 Nc3 d5 7 e5 Nge7 8 Bd3
Bd7 9 0-0 Ng6 10 Be3 Nh4 11 Ng5 g6
12 Rc1 Nxd4

(see diagram, top of next column)

13 Qg4 Bxc3 14 Qxh4 Bxb2 15 Rb1
Bc3 16 Rfc1 Rc8 17 Rxc3 Rxc3 18
Qxd4 Qc8 19 Bd2 Ra3 20 Bb4 Rxa2
21 Qf4 1-0



TIM HAMILTON - ANDREW SAMUELSON

DUNST

1 Nc3 c5 2 d4 cxd4 3 Qxd4 Nc6 4 Qa4
g6 5 Bg5 Bg7 6 e4 Nf6 7 f4 Qb6 8 0-0-0
Ng4 9 Nh3 Ne3 10 Rd3 Nxf1 11 Rxf1
0-0 12 e5 d6 13 Nd5 Qc5 14 b4 Qc4 15
Nxe7+ Nxe7 16 Bxe7 Bf5 17 Rdf3 Rfc8
18 R1f2 dxe5 19 Qb3 e4 20 Bc5 Rxc5
21 bxc5 Qxc5 22 Ng5 Rf8 23 Qa3 Qd4
24 Re3 Rd8 0-1

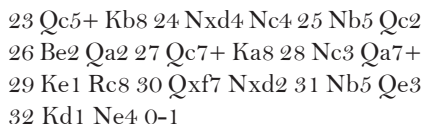
THOMAS MAGAR - JASON MCKINNEY
KING'S INDIAN

1 d4 Nf6 2 c4 g6 3 Nc3 Bg7 4 e4 d6 5
f3 c6 6 Be3 Qa5 7 Qd2 e5 8 d5 cxd5
9 cxd5 a6 10 Bd3 b5 11 Nge2 Nbd7
12 a3 Bb7 13 0-0 Qd8 14 b4 0-0 15 a4
bxa4 16 Rxa4 Ne8 17 Rfa1 Nc7 18 Ra5
f5 19 Qa2 f4 20 Bf2 Qe7 21 Rc1 h5 22
Na4 Rfc8 23 Nc5 Rcb8 24 Nxb7 Rxb7
25 b5 Nf8 26 b6 g5 27 bxc7 Rxc7 28
Rc6 g4 29 Rxc7 Qxc7 30 Rxa6 Rxa6
31 Qxa6 gxf3 32 gxf3 Qd7 33 Kg2 Qe7
34 Qc8 Kh7 35 Ng1 Qg5+ 36 Kh1 Ng6
37 Qf5 Qh6 38 Nh3 Kh8 39 Ng5 Kg8
40 Qe6+ 1-0

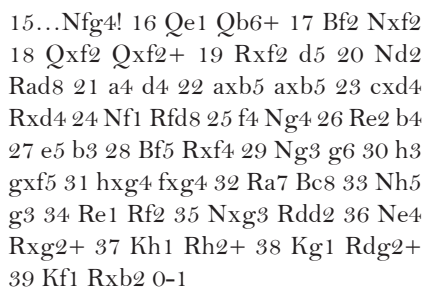


1 e4 c5 2 c3 Nf6 3 e5 Nd5 4 Nf3 Nc6 5
d4 cxd4 6 cxd4 d6 7 Bc4 e6 8 0-0 Nb6
9 Bb3 Be7 10 Nc3 d5 11 Bc2 Bd7 12 a3
Rc8 13 Qd3 a6 14 Rd1 Na7 15 Ne1 Nb5
16 Ne2 Na7 17 Qg3 g6 18 Bh6 Rg8 19
Nf4 g5 20 Nh5 Rxc2 21 Nxc2 Bb5 22
Bg7 Rxg7 23 Nxc7+ Kf8 24 Nh5 Be2
25 Nf6 Bxd1 26 Rxd1 Bxf6 27 exf6 Nd7
28 Qxg5 Qxf6 29 Qg3 Nc6 30 Qc7 Ke8
31 Qxb7 Qg6 32 Qxc6 1-0

1 Nc3 d5 2 e4 e6 3 d4 Bb4 4 e5 c5 5 a3
Ba5 6 Qg4 Ne7 7 b4 cxd4 8 Nb5 Bc7 9
f4 Nbc6 10 Qxg7 Rg8 11 Qxh7 a6 12
Nxc7+ Qxc7 13 Rb1 Bd7 14 Nf3 0-0
0 15 Qd3 Nf5 16 a4 Na7 17 b5 axb5
18 axb5 Bxb5 19 Rxb5 Nxb5 20 Qxb5
Qxc2 21 Bd2 Ne3 22 Kf2 Oe4



1 e4 e5 2 Nf3 Nc6 3 Bb5 a6 4 Ba4 Nf6
5 0-0 b5 6 Bb3 Bc5 7 Nxe5 Nxe5 8 d4
Bxd4 9 Qxd4 d6 10 c3 Bb7 11 f3 0-0 12
Bg5 h6 13 Bh4 c5 14 Qe3 c4 15 Bc2





Kingstowne Quad #26/Cash Quad #12

by Don Millican

Hearty congratulations are due to Don Millican for recently earning his Senior Tournament Director certification from the USCF. —ed

RINETEEN PLAYERS participated in the final Quad of 2005. The top Quad saw Keadu Belachew win gold with a perfect 3 points. Michael Callinan picked up the second place bronze medal with 1½. In the second Quad, W E Webbert & Gary McMullin tied with 2½, with Webbert taking the first place silver medal on tiebreak and McMullin going home with bronze for second. The third Quad ended with a three-way tie for first between Jeffrey Gato, Carlston Boucher & Adam Chrisney, all with 2. Gato and Boucher took the silver and bronze medals respectively on tiebreak. The bottom “Quad” was a seven-player Swiss, and William Frame along with Richard Ridley tied for 1st-2nd with 2½. Frame took the 1st place gold medal on tiebreak, leaving Ridley with silver for 2nd place. Sophie Gorman won the bronze medal for third place with 2.

Postmillennialism

We regretfully report that the Millennium Chess Festival will not be held in 2006. The MCF established itself as one of the nation's premier tournaments over the past five years thanks in large part to organizer Tom Braunlich's success in lining up local corporate sponsorship. However, Tom's subsequent move to Oklahoma created an organizational void. At the annual business meeting last Labor Day, a motion was approved that the VCF attempt to identify a new organizer in the Virginia Beach area or, failing that, consider taking on the MCF as a federation-sponsored event. However, lining up a suitable venue for MCF 2006 in its usual March time frame proved to be impossible at this late date. VCF President Marshall Denny remains intent on reviving the event in 2007. Anyone interested in helping organize the Millennium Chess Festival should contact him at President@vachess.org

**MILLENNIUM
CHESS
FESTIVAL
VIRGINIA BEACH, VA**



The December Quad was also the occasion for the Kingstowne Chess Club to mark its annual recognition of its most successful players of the year. Mike Callinan, for the second consecutive year, was the most successful player rated 1600 and up with 13 points in eight Quads. Kingstowne CC President Rob McKinney took the honors as the most successful player under 1600 with 14½ points in seven Quads. Both will receive their trophies at the first Quad for 2006 in March. December also constituted my first event directed with my upgraded STD certification. Seven years as a Club and Local director lead up to taking the Senior exam. I want to expressed my gratitude to the players who tolerated my mistakes as I gained valuable experience during that time.

Kingstowne FIDE Quad

BACK IN SEPTEMBER, Mike Atkins proposed a novel idea: to hold a FIDE-rated quad tournament, with two purposes. The first would be to give FIDE-rated players in the area competition among themselves. The second would be to give players without FIDE ratings a chance to obtain a ratable performance.

Mike's idea debuted on January 21 in Alexandria. Twelve players entered, evenly distributed between FIDE-rated and non-rated as it turned out. I divided the entries into two Swiss sections with three FIDE-rateds and three non-rateds players apiece. In the top section, Andrew Samuelson was the winner with 2½ points. Zhi-Ya Hu and Daniel Clancy tied for 2nd-3rd with 2. The second section saw Bora Yagiz win with 2½ points, while Harry Cohen & Stephen Jablon tied for 2nd-3rd with 2. Both sections finished pretty much in rating order; the FIDE-rated players won the prizes. Still, the competition was intense, with many games taking almost the full time allocated.

The next Kingstowne Quad event will be on March 4. This event is not listed in *Chess Life*, but rest assured, it will be held! Details below:

March 4

Virginia

Kingstowne Quad #27. 3RR G/100. Kingstowne Thompson Center, 6090 Kingstowne Village Pkwy., Alexandria, VA 22315. **EF** \$8 if received by 3/1, \$12 at site. Prizes: Medals to 1st and 2nd in each quad: gold to 1st if 3-0 score, else silver; bronze to 2nd. **Reg:** 8:30-9:30. **Rds:** 10-2-6. **Enter** (checks payable to): Don W. Millican, 5901B Prince George Dr., Springfield, VA 22152. e-mail (info only): dm407_92@hotmail.com. **W**



Arlington Chess Club Championship

by Mike Atkins

IM Larry Kaufman continued the family tradition by winning the 2005 Arlington Chess Club championship. A Kaufman has been champ every year since 2000(!); only in 2004 did Ray Kaufman break his father's run on club championships. Steve Linett won the Amateur title with a $2\frac{1}{2}$ score, having beaten and drawn two experts.

The tournament was held at George Mason University/Arlington campus, the scene of all but one of the club championships since they resumed in 1998. Twenty-nine of the fifty-nine entries were club members and competing for the titles. With those numbers, a five round event or a split into two sections might have worked better. However, the 4-round format with a slower time control was voted as the players' preference a couple years ago.

Halfway through, a dozen players were perfect at 2-0. Five of them still maintained perfection after three rounds. The final pairings saw GM Alex Wojtkiewicz playing Alex Barnett on board one; the family match of Larry vs Ray Kaufman on board 2; and John Meyer versus $2\frac{1}{2}$ -pointer IM Oladapo Adu on board three. Adu defeated Meyer and Larry won, leaving the final result up to the Battle of the Alex's.

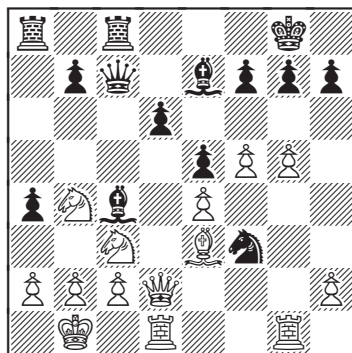
RAY KAUFMAN – LARRY KAUFMAN

SICILIAN

1 e4 c5 2 Nf3 d6 3 d4 cxd4 4 Nxd4 Nf6 5 Nc3 a6 6 Be2 e5 7 Nb3 Be7 8 g4 Be6 9 g5 Nfd7 10 Rg1 0-0 11 Be3 Nb6 12 Qd2 Nc4 13 Bxc4 Bxc4 14 0-0-0 a5 15 Kb1 a4 16 Nc1 Qc7 17 Nd3 Nc6 18 f4 Rfc8 19 f5 Nd4 20 Nb4 Nf3

(diagram)

21 Qf2 (21 Qg2!?, eg 21...Nxcg1 22 Nbd5 Qd8 23 Rxcg1 b5 24 g6 fxg6 25 fxg6 h6 26 Qh3 Bf8 27 Bg5 Qe8 28 Bxh6!) 21...Nxcg1 22 Rxcg1 Bd8 23 Ncd5 Bxd5 24 Nxd5 Qc4 25 Qg2 g6 26 f6 Ra5 27 h4 Rxd5 28 exd5 a3 29 b3 Qc3 30 Bc1 Bb6 0-1





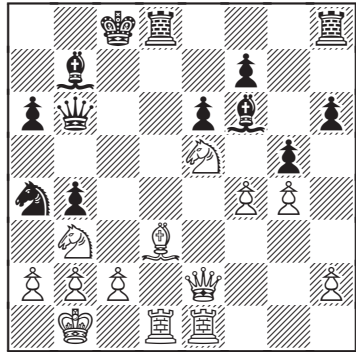
OLADAPO ADU - JOHN MEYER

SICILIAN

1 e4 c5 2 Nf3 d6 3 d4 cxd4 4 Nxd4 Nf6 5 Nc3 a6 6 Bg5 e6 7 f4 Nbd7 8 Qf3 Qc7 9 0-0-0 b5 10 Bd3 Bb7 11 Rhe1 b4 12 Nce2 Be7 13 g4 h6 14 Bxf6 Bxf6 15 Kb1 Nc5 16 Qe3 0-0-0 17 Nf3 Na4 18 e5 Be7 19 Nc1 Qb6 20 Qe2 dxe5 21 Nxe5 Bf6 22 Nb3 g5

(diagram)

23 Nc4 Qc7 24 Qd2 Qxc4 25 Bxc4 Rxd2 26 Rxd2 Nxb2 27 Bf1 Bc3 28 f5 exf5 29 Re7 Bxd2 30 Nxd2 Na4 31 gxf5 Rd8 32 Bd3 Rd7 33 Re8+ Rd8 34 Re7 Rd7 35 Re8+ Rd8 36 Re5 Rd5 37 Re7 Nc5 38 Nc4 Rd4 39 Nb6+ Kd8 40 Rxf7 Be4 41 Bxe4 Nxe4 42 f6 Nc5 43 Rf8+ Kc7 44 f7 Rd1+ 45 Kb2 Rf1 46 Rc8+ Kxb6 47 f8Q Rxf8 48 Rxf8 a5 49 Rh8 Kb5 50 Rxh6 Kc4 51 Rg6 Ne4 52 Ra6 1-0



In the tournament's last game to finish, Barnett had less than a minute left to Wojo's 15 minutes, but he was up a pawn in a RB+2P versus RN+1P ending when a draw was agreed. Thus Larry wound up in clear first with 4; Wojo, Adu & Barnett were joined by Shinsaku Uesugi at 3½. Only a few experts came and the only two who finished their schedule, Daniel Clancy & Kyle Kowalske, shared the Expert prize. Uesugi took the class A money into the place pool. Steve Linett & Sanda Costescu were top class B; Darryl West & David Paden top C; William Frame top D; and Jimmy Wang top U1200.



RUSSELL POTTER

- National Chess Master
- Over 35 Years of Chess Teaching Experience
- Three-time Va State Chess Champion

CHESS LESSONS BY PHONE OR IN PERSON

Telephone:
(540) 344-4446



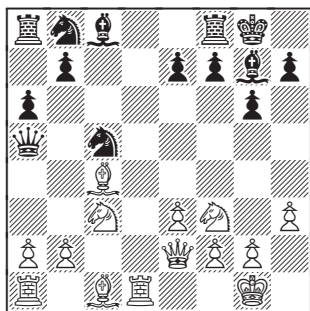
email:
chess_lessons@verizon.net



LARRY KAUFMAN - DANIEL CLANCY

GRÜNFELD

1 d4 d5 2 c4 c6 3 Nc3 Nf6 4 e3 g6 5
Nf3 Bg7 6 Be2 0-0 7 0-0 dxc4 8 Bxc4
c5 9 h3 a6 10 dxc5 Nfd7 11 Qe2 Nxc5
12 Rd1 Qa5



13 b4 (13 Nd5 Nc6 14 b4 Qa4 15 bxc5
Bxa1 16 Nb6) 13...Na4 (13...Qxb4 14
Nd5 Qa5 15 Bd2 Qd8 16 Bb4 Nbd7 17
Bxc5) 14 bxa5 Nxc3 15 Qc2 Nxd1 16
Nd4 Rds 17 Ba3 Bf5 18 Qxd1 e5 19
Nxf5 Rxd1+ 20 Rxd1 1-0



YANG SUE HE - CHRIS SEVILLA

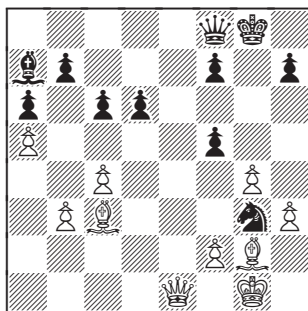
SICILIAN

1 e4 c5 2 Nf3 d6 3 d4 cxd4 4 Nxd4
Nf6 5 Nc3 a6 6 Bg5 e6 7 Qd2 Be7 8
0-0-0 Nbd7 9 Bc4 Nc5 10 Rhe1 b5 11
Nc6 Qc7 12 Nxe7 Kxe7 13 Bb3 Bb7
14 a3 Nxb3+ 15 cxb3 b4 16 axb4 a5
17 b5 a4 (Black plays dynamically but
White keeps cool.) 18 e5 dxe5 19 bxa4
Rhd8 20 Qc2 Rd4 21 Nd5+ Bxd5 22
Qxc7+ Kf8 23 Rxd4 exd4 24 Bxf6
gxf6 25 Qc5+ Kg7 26 Qxd4 Rc8+
27 Kd2 Rc4 28 Qxc4 Bxc4 29 b6 Ba6
30 b4 1-0

ALEK WOJTKIEWICZ - DAVID SLACK

KING'S INDIAN

1 Nf3 Nf6 2 c4 g6 3 g3 Bg7 4 d4 0-0 5
Bg2 d6 6 0-0 Nbd7 7 Nc3 e5 8 e4 c6 9
Rb1 Re8 10 h3 exd4 11 Nxd4 Nc5 12
Re1 Qe7 13 Bf4 Ne6 14 Nxe6 Qxe6 15
b3 Nh5 16 Bd2 Bd4 17 Ne2 Bb6 18 Bc3
Qe7 19 Nd4 Bd7 20 Qd2 Rad8 21 Rbd1
Bc8 22 a4 a6 23 Nf5 Bxf5 24 exf5 Qf8
25 Rxe8 Rxe8 26 a5 Ba7 27 g4 Ng3 28
Re1 Rxe1+ 29 Qxe1 gxf5



30 Bf3 Ne4 31 Bxe4 fxe4 32 Qxe4 h6
33 Qf4 d5 34 Qf6 d4 35 Bd2 Kh7 36
Qf5+ Kg8 37 Qd7 Qb8 38 Qe7 d3 39
c5 Qf8 40 Qxf8+ Kxf8 41 Bxh6+ Ke7



42 b4 Bb8 43 Bd2 Be5 44 f4 Bd4+ 45 Kg2 Ke6 46 f5+ Kd5 47 Kf3 Kc4 48 g5 Bc3 49 g6 fxg6 50 fxg6 Kb3 51 Ke4 Kc2 52 Bf4 Bg7 53 h4 d2 54 Bxd2 Kxd2 55 h5 1-0

JOHN FARRELL – LARRY KAUFMAN

QUEEN'S GAMBIT SEMI-SLAV

1 c4 e6 2 Nf3 d5 3 d4 Nf6 4 Bg5 h6 5 Bxf6 Qxf6 6 Nc3 c6 7 e3 Nd7 8 Be2 dxc4 9 Bxc4 g6 10 0-0 Bg7 11 Qc2 0-0 12 Rad1 Qe7 13 a3 b6 14 Ne4 Bb7 15 b4 a5 16 b5 Rac8 17 Qd3 Rfd8 18 bxc6 Bxc6 19 Ned2 Nc5 20 Qb1 Na4 21 Qb3 b5 22 Bd3 Bd5 23 Qxb5 Nc3 24 Qxa5 Nxd1 25 Rxd1 Ra8 26 Qb4 Bf8 27 Rb1 Rxa3 28 Qb5 Qe8 29 Qxe8 Rxe8 30 Be4 Rea8 31 g3 Ra1 32 Bxd5 exd5 33 Kg2 Rxb1 34 Nxb1 Bb4 35 Nbd2 Ra2 36 Nf1 f6 37 g4 Kf7 38 Ng3 Bd6 39 h3 Ra1 40 Ne2 Ra8 41 Nc3 Ke6 42 Nb5 Bb8 43 Nc3 Ra3 44 Ne2 Ra2 45 Ng3 Ra7 46 Nh4 Kf7 47 Nf3 Bd6 48 Ne2 Rc7 49 Ng3 Rc8 50 Nh4 Rh8 51 Nf3 Bc7 52 Ne2 h5 53 Ng3 h4 54 Nf1 g5 55 N1h2 Ra8 56 Nf1 Ra2 57 N1h2? (57 Ne1) 57...Bg3 0-1

MAJUR JUAC – ALEX BARNETT

SICILIAN

1 e4 c5 2 Bc4 Nc6 3 Nf3 e6 4 Nc3 a6 5 a4 Nf6 6 0-0 d5 7 exd5 exd5 8 Ba2 Bg4 9 h3 Bh5 10 Qe1+ Be7 11 Ne5 Nd4 12 Bb1 0-0 13 f4 Bg6 14 d3 Bd6 15 Be3 Re8 16 Nxc6 hxc6 17 Qf2 Qb6 18 b3 Nf5 19 Bd2 d4 20 a5 Qc6 21 Na4 Nd5 22 c3 Nde3 23 Re1 Bxf4 24 Re2 Bg3 25 Qf3 Qd6 26 Be1 Bxe1 27 Rxe1 Nh4 28 Qf2 Nhxg2 29 Ba2 Nxe1 30 Rxe1 Re5 31 Qf4 Qd5 32 Rxe3 dxe3 33 Kh2 Rg5 34 Qe4 Qxe4 35 dxe4 e2 0-1

KYLE KOWALSKIE – ALEK WOJTKIEWICZ SICILIAN, SMITH-MORRA

1 e4 c5 2 d4 cxd4 3 c3 dxc3 4 Nxc3 Nc6 5 Nf3 e6 6 Bc4 Qc7 7 0-0 Nf6 8 Nb5



Qb8 9 e5 Ng4 10 Bf4 a6 11 Nd6+ Bxd6 12 exd6 b5 13 Bb3 Qb6 14 h3 Nf6 15 Bg5 Bb7 16 Be3 Qd8 17 Bg5 h6 18 Bh4 Qb6 19 a3 Nh7 20 Bg3 0-0 21 Qd3 f5 22 Ne5 Qd4 23 Qxd4 Nxd4 24 Ba2 Nf6 25 Rad1 Ne2+ 26 Kh1 Nxc3+ 27

fxg3 Kh7 28 g4 g6 29 Rc1 Rac8 30 Kg1 Kg7 31 Rfd1 Rxc1 32 Rxc1 Rc8 33 Rxc8 Bxc8 34 gxf5 gxf5 35 g4 fxg4 36 hxg4 Kf8 37 Kf1 Ne8 38 Bxe6 dxe6 39 d7 Bxd7 40 Nxd7+ Ke7 41 Nb8 Nc7 42 Ke2 Kd6 43 Ke3 a5 44 Ke4 Nd5 45 Na6 Nf6+ 46 Kf3 Nd7 47 b4 a4 48 Ke4 Kc6 49 Kd4 Kb6 50 Nc5 Nxc5 51 bxc5+ Kc6 52 Ke5 Kxc5 0-1

JOHN MEYER – BILL CARROLL

GRÜNFELD

1 d4 Nf6 2 c4 g6 3 Nc3 d5 4 cxd5 Nxd5 5 Bd2 Bg7 6 Nf3 c5 7 e4 Nxc3 8 Bxc3 cxd4 9 Nxd4 Bd7 10 Qb3 Qc7 11 Bc4 0-0 12 0-0 a6 13 Rac1 Nc6 14 Nxc6 Bxc6 15 Bxg7 Kxg7 16 Qc3+ e5 17 Bd5 Rac8 18 Bxc6 bxc6 19 Rfd1 Rfd8 20 g3 c5 21 Rxd8 Rxd8 22 Rc2 f6 23 Qxc5 Qxc5 24 Rxc5 Rd2 25 Rc7+ Kh6 26 Rb7 Kg5 27 Kg2 h5 28 h4+ Kg4 29 Rb6 g5 30 Rxf6 Rxb2 31 Rg6 1-0





Gone But Not Forgotten

OLD OPENINGS FAVORITES NEVER DIE;
THEY JUST AWAIT THEIR PROPER MOMENT

by Macon Shibut

EOPENINGS come and openings go. In the life of every active tournament player new weapons get introduced into the arsenal and old variations are put out to pasture. I suppose retirement most often follows on the heels of some galling defeat — *I'll never play that %#*&# variation again!* — but that's not always the case. I am thinking of a particular line that I used to employ with some frequency and for which I harbored a sentimental attachment, as it was a link to the hero worship of my youth: yet another of the little tricks that state champion Ed Kitces showed me long, long ago. It was soon after I *won* the following game at the 2003 Atlantic Open that I decided this would be a fitting swan song for my beloved old war horse. I have succeeded in letting it rest in peace since that day, more than two years past.

I wanted to play in this year's Virginia Open but 'flu-like symptoms' struck me on the day before the event. (I will spare you further detail.) I recovered sufficiently to visit the tournament for the final round on Sunday, however. And what do you know— my old variation surfaced in a most entertaining game that I witnessed there. Now I can't escape the feeling: *is that a distant trumpet sound I hear?* A call back, a return to arms...

MACON SHIBUT - EVAN JU
2003 ATLANTIC OPEN
FRENCH

1 e4 e6 2 Nf3 d5 3 e5 c5 4 b4!?

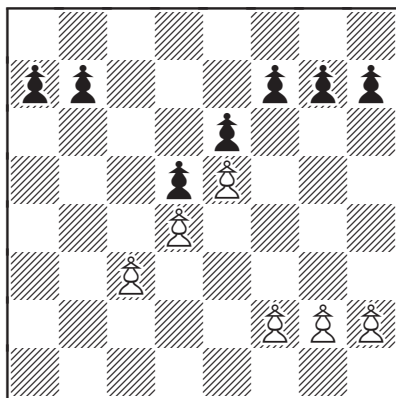
I first saw this "French Wing Gambit" in a game Kitces-Tompkinson at a Virginia Closed sometime around 1980. Truth be told, White's plan did not exactly succeed on that occasion, but my faith in Ed's judgment was such that I readily added the gambit to my repertoire after he gave me a brief tutorial on its finer points one evening at the old VCU Chess Club.

4...cxb4 5 a3 Bd7

Of course Black could also keep hacking away, 5...bxa3, but most of the time they go 5...Nc6 6 axb4 Bxb4 7 c3. Now, whether Black retreats the bishop to either



a5, e7 or f8 (it always seemed to me that the latter is a move that only French Defense players could love), White continues d4 setting up the basic, characteristic structure of the French Wing Gambit.



As dubious openings go, this one has a fairly credible positional foundation. Normally in the French Black wants to react by attacking the pawn chain at its base, ...c5, whenever White closes the position by advancing e5. Here White has established the characteristic central wedge, practically pinching Black's camp in half, *but Black lacks a c-pawn with which to undermine the center*. That means White will be able to maintain his spearhead for a long time. Black will just have to live with it, consoling himself with his extra pawn.

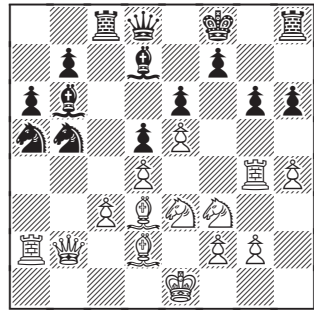
It will be a while before that pawn begins to assert itself, however, so White doesn't need to hurry. Indeed, his plan from here is simply to develop the pieces and act as if nothing special has happened. Sooner or later an attack will turn up, almost of its own accord, because the very structure of the position presents Black a dilemma regarding the placement of his king: Castle queenside and White already has two open files for the attack; castle kingside and White has the typical space advantage with all his pieces naturally pointing in that direction; stay in the center and life will always be a bit awkward, with White probing on both flanks and Black unable to connect his rooks. Besides, White has the thematic lever f2-f4-f5 in his back pocket.

The aforementioned game I watched at the Virginia Open was Frank Gomez *vs* Dave Long, where actually the gambit arose via Sicilian move order: 1 e4 c5 2 b4 cxb4 3 a3 d5 4 e5. Now Black chose 4...e6 and after 5 axb4 Bxb4 6 c3 Bf8 7 d4 *voilà! Nous sommes arrivés*.



6 axb4 Bxb4 7 c3 Bf8

Like I said, this seems to be a natural reflex in French players, their inner Nimzowitsches unable to restrain themselves. Anybody else would prefer either 7...Ba5 or 7...Be7. I have even seen the illogical 7...Bc5?! on more than one occasion. For instance, I have fond memories of the game Shibut-Suico, 1995 Canadian Open, partly because Toronto is my favorite North American city and partly because I got to play a true piece sacrifice: 8 d4 Bb6 9 Bd3 h6 10 Na3 a6 11 h4 (not the most common plan, but on intuitive grounds I felt that his early ...h6 invited R-h3-g3) 11...Bd7 12 Nc2 Ba5 13 Bd2 Rc8 14 Ra3 Na7 15 Qa1 Bb6 16 Ne3 Nb5 17 Ra2 Ne7 18 Rh3 Nc6 19 Rg3 Kf8 20 Rg4 Na5 21 Qb2 g6 (*diagram*)



22 Bxg6! fxg6 23 Rxg6 Black doesn't even face an immediate threat but his army is a long way off and White has the very compelling moves Rf6, Q-c2-g6, Ng4, and either N or B xh6 all on the program. There followed 23...Nc4 24 Nxc4 Rxc4 25 Bxh6+ Rxh6 26 Rxh6 Kg7 27 Qd2 Nxd4 giving something back to try to bleed the attack 28 Nxd4 Bxd4 29 cxd4 Rxd4 30 Qxd4 Kxh6 31 Ra3! The attack is decisive even with reduced material. 31...Kh7 32 Qd3+ Kh8 33 Qg6 Qg8 34 Qh6+ Qh7 35 Qf6+ Qg7 36 Rg3 Qxf6 37 exf6 Be8 38 Rg7 Bc6 (if 38...Bh5 39 g4 etc, but otherwise White threatened f7!) 39 h5 e5 40 h6 1-0 in view of f7 etc.

8 d4 Ne7 9 Bd3 Ng6 10 h4

Despite the example of text and the Suico game above, don't assume that White always plays this move. Black's knight maneuver Ng8-e7-g6 or -f5 is very common, of course, but aside from disruptive pawn pushes (h4, g4, etc) White can also attack with piece play. I often played an impudent Ng5! in such positions; the knight doesn't necessarily threaten anything but training its sights on f7 and h7 sure looks menacing. Besides, the way is cleared for further Qh5 and possibly f4-f5. If Black's knight is on f5 and he tries to kick away White's knight by ...h6, White replies Qh5 provoking a further weakening (...g6, which will be answered Qh3 of course). If Black's knight is on g6 this will not work since Black's rook is defended and thus Qh5 doesn't actually prevent hxg5. On the other hand, a knight on g6 often (as in the present position) renders ...h6 impossible owing to Nxf7 followed by Qf3+ or Qh5 when White recovers the piece. I recall I once had a game versus Allen Cooley—unfortunately it seems I have lost the scoresheet—where things weren't quite so clear and Nxf7 may have qualified as a "sacrifice." Still within



just a couple moves it became evident that my compensation was overwhelming and I won quickly.

I'll share one of my losses with this gambit, from a simultaneous exhibition I performed about six years ago: Shibut – Ralph Belter 1 e4 e6 2 Nf3 d5 3 e5 c5 4 b4 cxb4 5 a3 Nc6 6 axb4 Bxb4 7 c3 Ba5 8 d4 Nge7 9 Bd3 Bd7 10 0-0 Qc7 11 Ng5 Nf5 12 Ba3 h6 13 Qh5 Nd8 14 g4? (rash; 14 Bxf5! exf5 15 Bd6 was better, eg 15...Qb6 16 Re1 strongly considering e5-e6. If then 16...Be6 White can just recover his pawn, 17 Nxe6 Nxe6 18 Qxf5 as in the event of 18...Nxd4 White would have 19 Qg4! and the knight can't simply go back to e6 because of Qa4+ winning Black's bishop—a point I overlooked during the game. Nor would 19...g6 20 Rxa5 Qxa5 21 Qxd4 save him.) 14...Bxc3!? 15 Rc1 Nxd4 16 Bd6 Qxd6 17 exd6 Bxa1 18 Nd2 Bb2 19 Rc7 N4c6 20 Nxf7 Nxf7 21 Bg6 Nd8 22 Nf3 Rf8 23 Ne5 (a very Morphyesque position) 23...Bxe5 24 Qxe5 Rc8 25 Qxg7... Well, it was a simul after all. White retains practical chances but it's really hard to add anything more to the attack. Black hung on and won in the end.

10...Be7 11 h5 Nf8 12 h6 g6

Again the mark of a dyed-in-the-wool French player, willing to accept any indignity for the sake of a reliable blockade, a sound pawn structure, and hope of long-term prospects.

13 Nbd2 Bc6 14 Nf1 Nfd7 15 g4 b5 16 Ne3 Nb6 17 g5 Nc4 18 Ng4 Nd7 19 0-0 a5 20 Nf6+ Bxf6

The dark square bishop worked nicely in conjunction with Black's pawn formation but if he tries to retain it, 20...Nxf6 21 gxf6 Bf8, he might have been left without his king rook (and with his king in the center) for a long time.

21 gxf6 Ndb6 22 Qb3 0-0 23 Ng5 Qd7 24 Ra2 Rab8 25 f4 Na4 26 Rg2

Just one more preparation—Qc2—and White will be ready to commence sacrificial operations.

26...Kh8 27 Qc2 Rg8

Black devotes a couple moves to defense; 27...b4 also deserved consideration.





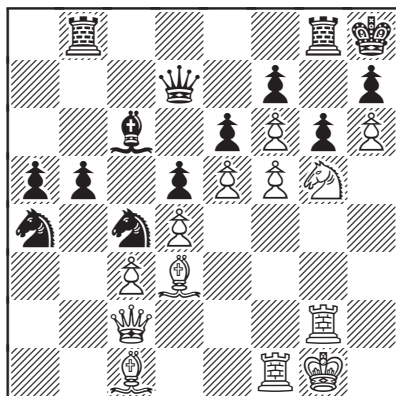
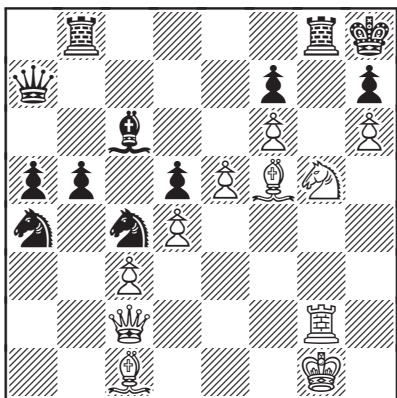
28...gxf5

28...exf5 would offer White the resource e6 followed by B-f4-e5, eg 29 e6 fxe6 30 f7 Rgf8 31 Bxc4 etc

29 Rxf5!

A heavy investment but I made it lightheartedly as there is really no alternative.

29...exf5 30 Bxf5 Qa7 (*diagram*)



The storm breaks

31 Bd7

Almost to a man, strong players fire off this move when shown the diagram position. White threatens mate by Qh7 and simultaneously drops interference onto Black's 2nd rank to threaten Nxf7# as well. It proved irresistible to me over the board—the more so since I overlooked Black's 32nd move and therefore believed I was simply winning. In fact, the less

elegant 31 Bxh7! was stronger. Play would probably continue 31...Rxc5 32 Rxc5 Nxc3! 33 Qxc3 Kxh7 (33...Nxe5!) and now—truth in advertising—I suffered a stupid blind spot and considered only 34 Qc2+ (“back again to the attack diagonal”) Kh8 35 Rg7 when 35...Qxd4+ looked discouraging, whereas obviously 34 Qd3+ keeps d4 defended and wins straightaway.

31...R_xg5

Pretty much forced; if 31...Rg6 32 Nxf7+ Kg8 33 Rxd6+ etc

32 R x g5

Now I'd calculated 32...Qxd7? 33 Rg7 and mates; or 32...Rg8 33 Rg7 Rxg7+ 34 hxg7+ Kg8 35 Bf5 and Bxh7. Everything seemed in order...

32...Nxe5!



This should turn the tables. Black even had another possible defense, 32...Nxc3!, so I'd really botched the analysis. But there was no time to reflect upon that, as the position is still razor sharp and both sides were short on time.

33 Rg7 Ng6 34 Bxc6 Rc8

A natural choice and, indeed, the move I expected: his queen is already defending f7, so Black aligns his unemployed rook against my bishop and queen. However, hitting my bishop with the queen by either 34...Qb6 (eyeing possible ...Qxf6) or 34...Qc7 (eyeing ...Qg3+) would have been more unpleasant.

35 Bxd5 Rxc3

I did work out a nice variation here: if 35...Qxd4+ 36 cxd4 Rxc2 37 Bxf7! Rxc1+ 38 Kf2 Rc8 39 Be6 Rf8 40 f7 Ne7 41 d5 wins

36 Qe4

There wasn't time to figure out what was happening but I had no doubt about this centralizing move. White will either give mate or die trying, and my dark square bishop had no foreseeable role in this struggle. In fact, with hindsight I believe it was precisely the sacrifice of this bishop that created the psychological precondition for Black's coming blunder. For the moment White threatens Qe8 and mate...

36...Rxc1+ 37 Kf2

...and now, had he not previously captured a piece on c1, Black would likely have found the correct move even in time trouble: 37...Qb8! The point is that he would be defending the mate and also counterattacking Δ ...Qh2+. Instead, I'm certain his feverish thoughts ran something like this: "The bishop is hanging with check! I can snatch it and *still get back to defend my back rank...*" And thus...

37...Rc8? 38 Bxf7

With new and decisive threats.

38...Nc3 39 Rxh7+! Kxh7 40 Qxg6+ 1-0





2006 Virginia State Collegiate Chess Championships

April 15-16, 2006



Place: Campus of George Mason University, Student Union Building II, 4400 University Drive, Fairfax, VA 22030

Cost: Advance Entry Fee \$100 per team if registered by April 7, 2006. Late Entry Fee \$125 (after April 7th).

Tournament Format: Team vs. Team "4-board" competition. 4 or 5 rounds of USCF-rated chess, depending on number of teams. Detailed rules on line after Dec 15th at the VA Chess Federation's Web Site (www.vachess.org), Scholastics Page.

Team Composition: Up to 4 Players and 2 Alternates per team; minimum team size is 3 Players. Schools can enter more than 1 team. Teams from same school will not play each other unless absolutely necessary for reasonable pairings. No one can be on more than one team. All team members must be less than 26 years old on Sept. 1, 2006 and must currently be enrolled in the school for which they are playing with at least a 6 credit-hour course load (undergraduate or post-graduate). Players, Team Coach or Team Captain should bring and be prepared to show proof of age and student enrollment (driver's license, official course schedule and/or grade sheet, and student ID card) for all team members. For each round players sit in USCF rating order, with highest rated player on Board 1, lowest on Board 4 (or Board 3 if only 3 players). Unrated players sit beginning on Board 4, then Board 3, etc. For teams with only 3 players, Board 4 results are forfeit losses. Ratings used will be as given in the April 2006 USCF Rating Supplement. Team Line-up (4 players) can change for each round, but must be provided in writing by the Team Captain to the Tournament Director (TD) at least 30 minutes before the start of a round. Teams failing to provide their Line-up will be paired using either the top-4 rated names on the team, or their Line-up from the previous round. See TD if 2 or more players on a team are unrated. Players with ratings from other countries or FIDE are not unrated-- notify TD when entering your team if you have players without a USCF rating but having a foreign rating.

Awards & Scoring: Prestigious Trophies to Top 3 Teams (more depending on number of teams). Commemorative Plaques to winning team members and coach/faculty advisor! Scoring by match points, with ties broken using US Amateur Team tie-break system as specified in Rule 34G2 of the USCF's *Official Rules of Chess*, 5th Edition.

Time Controls & Start Times:

- Rounds 1-2, or 1-3 G/90. Last 2 rounds 25/60 SD1. Decision on # of rounds and time controls will be made by the TD at the 8AM Team Captain's Meeting.
- Saturday, Rounds 1-3: 9 am, 1 pm, 6 pm. Sunday, Rounds 4-5: 10am, 3pm.
- Awards presented immediately after last round.

Other Requirements: Current USCF membership required for each team member. Join or renew online by April 7th and bring your electronic receipt from USCF. You can also join or renew during Late Registration (see below).

Advance Registration: Opens Jan 1, 2006—closes April 7th. \$100 per team, regardless of the number of players on a team. Enter on-line at www.vschess.org, by email to mhoffpaur@aol.com, or by postal mail post-marked by April 7th. See reverse of this flyer. No phone entries. Teams registered through Advance Registration can pay their \$100 team fee when they arrive on Friday evening or Saturday morning (cash or check, no credit cards – checks payable to "VCF Scholastic Chess"). Changes to Team Roster can be made by email or mail at any time until Advance Registration closes on April 7th. Roster changes after April 7 incur a \$5 fee for each change.

Late Registration: Teams not registered by April 7th will enter through Late Registration on Friday April 14th at the Tournament Site, from 6PM to 9PM. Entire team need not be present to register. Teams can also register late by email from April 8th until 9PM April 14th. Late Registration is \$125. Payments by cash or check, no credit cards.

ALL ENTRY FEES AND USCF MEMBERSHIPS MUST BE PAID IN FULL BY 8AM SATURDAY, APRIL 15th. TEAMS OR PLAYERS NOT PAID UP IN FULL WILL NOT BE PAIRED FOR THE FIRST ROUND OF THE TOURNAMENT.

TEAM CAPTAINS' MEETING AT 8AM SATURDAY, APRIL 15th. All Teams must be represented at this meeting.

Team Roster Changes: Will not be accepted after 9PM Friday, April 14th and are not allowed during Tournament Play for any reason. Line-up changes as described under Team Composition above are not the same as Roster Changes, as Line-up Changes occur when one or more already-rostered Alternate Player(s) step in to play.

Entry fee will be refunded in full if Team notifies the organizer by 9PM Friday, April 14th.

Bring your own chess clocks, pens, pencils, and notation sheets. Sets and boards will be provided for the event.

Logging: All teams are responsible for their own arrangements, GMU cannot provide room and board. Tournament organizer is working with local hotels to try to obtain discounted rates.

Organizer and Chief Tournament Director: Mike Hoffpaur, USCF Senior TD, and Scholastics Coordinator for the VA Chess Federation. Phone 757-846-4805, email to: mhoffpaur@aol.com



TEAM ENTRY FORM

2005-06 VA State Collegiate Chess Championships

April 15th & 16th, 2006 – Campus of George Mason University

3 Ways to Enter: Online at www.vschess.org, postal mail using this form, or email.

Name of your Team Name (e.g. UVA, Team A; or, ODU Chess): _____

Name of College/University: _____

Team Composition (please print clearly)

- This Roster is not the "Team Line-Up" for any particular Round of play, but it does determine who is eligible to be on a team's Line-Up. The actual Team Line-Up is decided by the Team Captain round-by-round at the tournament.
- Each team can have a maximum of 6 members, but must have at least 3.

	Last Name	First Name & MI	USCF ID#	Date of Birth	Remarks
	(example) Smith	John L.	Give #, or write "new"	Nov 17, 1985	Team Captain
	(example) Perivic	Edvan	New	Jan 1, 1987	FIDE rating 2155
<i>Player 1</i>					
<i>Player 2</i>					
<i>Player 3</i>					
<i>Player 4</i>					
<i>Alternate 1</i>					
<i>Alternate 2</i>					

Team Point of Contact (POC) information (in case we have questions about your entries):

	Name	Email Address	Phone Number
<i>Primary POC</i>			
<i>Alternate POC</i>			

Mail completed entry to:

Mike Hoffpauir
ATTN: VA Collegiate Ch
405 Hounds Chase
Yorktown, VA 23693-3356

Or email all information required by this form to Mike Hoffpauir: mhoffpauir@aol.com.

You can also fax the completed Team Entry Form to Mike at (753)830-7154.

All checks payable to "**VCF Scholastic Chess**." OK to send your entry fee with your entry, but must be paid in full by 8AM Saturday. See terms of "Advance Registration" and "Late Registration" as prescribed on the front side of this tournament flyer.

Chess Clubs

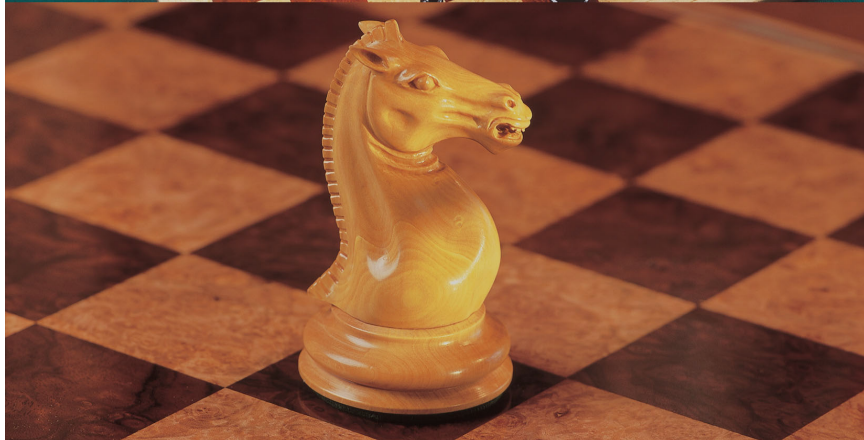
Please send additions / corrections to the Editor.

♣ Alexandria: Kingstowne Chess Club, Kingstowne South Center, 6080 Kingstowne Village Parkway, Tuesdays 7-10pm, info Rob McKinney, robcmckinney@aol.com, (703) 924-5883 ♣ Arlington: Arlington Chess Club, Lyon Village Community House, 1920 N Highland St (at Lee Hwy), Fridays 7:30pm. Registration for rated Ladder and Action events ends 8pm. Blitz/Quick tourney first Friday of each month. Info www.wizard.net/~matkins or John Campbell (703) 534-6232 ♣ Arlington Seniors Chess Club, Madison Community Center, 3829 N Stafford St, info (703) 228-5285 ♣ Blacksburg: Chess Club of Virginia Tech, GB Johnson Student Center, Rm 102, Virginia Tech, Wednesdays 7-9pm ♣ Charlottesville: Charlottesville Chess Club, St Mark Lutheran Church, Rt 250 & Alderman Rd, Monday evenings ♣ Chesapeake: Zero's Sub Shop, 3116 Western Branch Blvd (Rt 17), (Poplar Hill Plaza near Taylor Rd intersection), Mondays 6pm to closing ♣ Great Bridge United Methodist Church, corner of Battlefiled Blvd & Stadium Dr, Tuesdays, 6:30-10pm, info 686-0822 ♣ Culpeper: Culpeper Chess Club, Culpeper County Public Library, Rt 29 Business (near Safeway). Adults meet Tuesdays 6:30-8:45pm, juniors Thursdays 6:30-8:45pm. Info John Clark 540-829-6606 ♣ Fort Eustis: contact Sorel Utsey 878-4448 ♣ Danville: Danville Chess Club, Danville YMCA, 810 Main Street. Mondays 6:30-9:30 pm. Info John Thompson 434-799-8898 ♣ Fredricksburg: Spotsylvania Chess, Lutheran Church Rte West 4.7 miles from Exit 130 on I-95. Every Tuesday 6-9pm, info Mike Cornell 785-8614 ♣ Glenss: Rappahannock Community College - Glenss Campus Chess Club, Glenss Campus Library, Tuesdays 8-10pm in the student lounge, info Zack Loesch 758-5324(x208) ♣ Harrisonburg: Shenandoah Valley Chess Club, Trinity Presbyterian Church, corner of S High (rt 42) & Maryland Ave (Port Republic Rd), Fridays 7:30pm, <http://cep.jmu.edu/huffmacj/svcc/svcchome.html> ♣ McLean: Booz Allen Hamilton CC, Hamilton Bldg, Rm 2032, 8283 Greensboro Dr. Thursdays, info Charles Thrasher 703-917-2235 ♣ Mechanicsville: Stonewall Library, Stonewall Pkwy, Mondays 6:30-9pm 730-8944 ♣ Norfolk: Tidewater Chess Club, Beth Messiah Synagogue, 7130 Granby St, Norfolk. Tuesdays, 7-10 pm, Ernie Schlich (757) 853-5296, ESchlich@aol.com ♣ Larchmont Public Library, 6525 Hampton Blvd, Wednesday 6-9pm ♣ ODU Chess Club, Webb Univ Ctr, Old Dominion University, info www.odu.edu/~chess ♣ Purcellville: Blue Ridge Cafe, Thursdays 5-7pm and Saturdays 1-4pm (& bi-wkly 4-7pm), info Douglas A Gripp, 540-668-7160 ♣ Richmond: The Kaissa Chess Club, Willow Lawn Shopping Center, in the food court, Thursdays 5-9pm. info Alfredo Franco 367-1154 ♣ The Side Pocket, Cross Roads Shopping Center, Staples Mill Rd. A billiards parlor with chess tables set up any hour, every day ♣ Huguenot Chess Knights, Bon Air Library Community Room, 1st & 3rd Friday of each month, 7-11pm, info Walter Chester 276-5662 ♣ Jewish Ctr CC, 5403 Monument Ave. 4-6pm every other Sunday beginning 1/8/95. (804) 288-0045 ♣ VCU CC, 907 Floyd Ave, Capital Ballroom C, Saturdays 3-7pm, info Michael Neal, grandmaster_2b@yahoo.com ♣ Roanoke: Roanoke Valley Chess Club, Grandin Ct Rec Ctr, Corner of Lofton & Barham Rd SW, Fridays 7:00-11:00pm, Info Brian Roark (540) 378-1316 or brian.roark@acterna.com ♣ Virginia Beach: Tidewater Community Chess Club, Bldg D ("Kempsville") Cafeteria, Tidewater Community College Va Beach Campus, 1700 College Crescent Rd. Mondays 7-10pm ♣ Williamsburg: Williamsburg CC, The Williamsburg Landing, 5700 Williamsburg Landing Drive. 2nd floor Game Room. Mondays 7-9pm. Don Woolfolk 757-229-8774 or Tom Landvogt 757-565-5792 ♣ Winchester: Winchester Chess Club, Westminster-Canterbury Home for the Elderly, Tuesdays 7pm ♣ Woodbridge: Prince William Chess Club, Tuesdays 7-9pm at the Game Parlor, Prince William Square, 14400 Smoketown Road. Contact Dick Stableford, 703-670-5887 or o6usmc@comcast.net ♣ Yorktown: Olde Port Chess Club, Thursdays 6:30-10:30pm in the clubhouse at Olde Port Cove, for adult players (age 18 and above—exceptions are made for serious young players rated above 1800 USCF.) Contact Funda Hutchins, 868-4375 or zugzwang@cox.net



Incomparable Chess Sets From

THE HOUSE OF STAUNTON



Chess Sets - Chess Boards - Antique Sets - Chess Clocks

EMAIL: sales@houseofstaunton.com ~ PH: (256) 858-8070

Visit us on the Internet at www.houseofstaunton.com

Virginia Chess
1370 South Braden Crescent
Norfolk, VA 23502

Nonprofit Organ.
US Postage
PAID
Permit No. 97
Orange, VA
22960

In This Issue:

Tournaments

2006 Virginia Open	1
Kingstowne Quads.....	6
Arlington Chess Club Championship	8

Features

Gone But Not Forgotten.....	12
-----------------------------	----

Odds & Ends

About the Millennium Festival	6
Upcoming Events	7, 18
Chess Clubs	20
VCF Info	inside front cover

